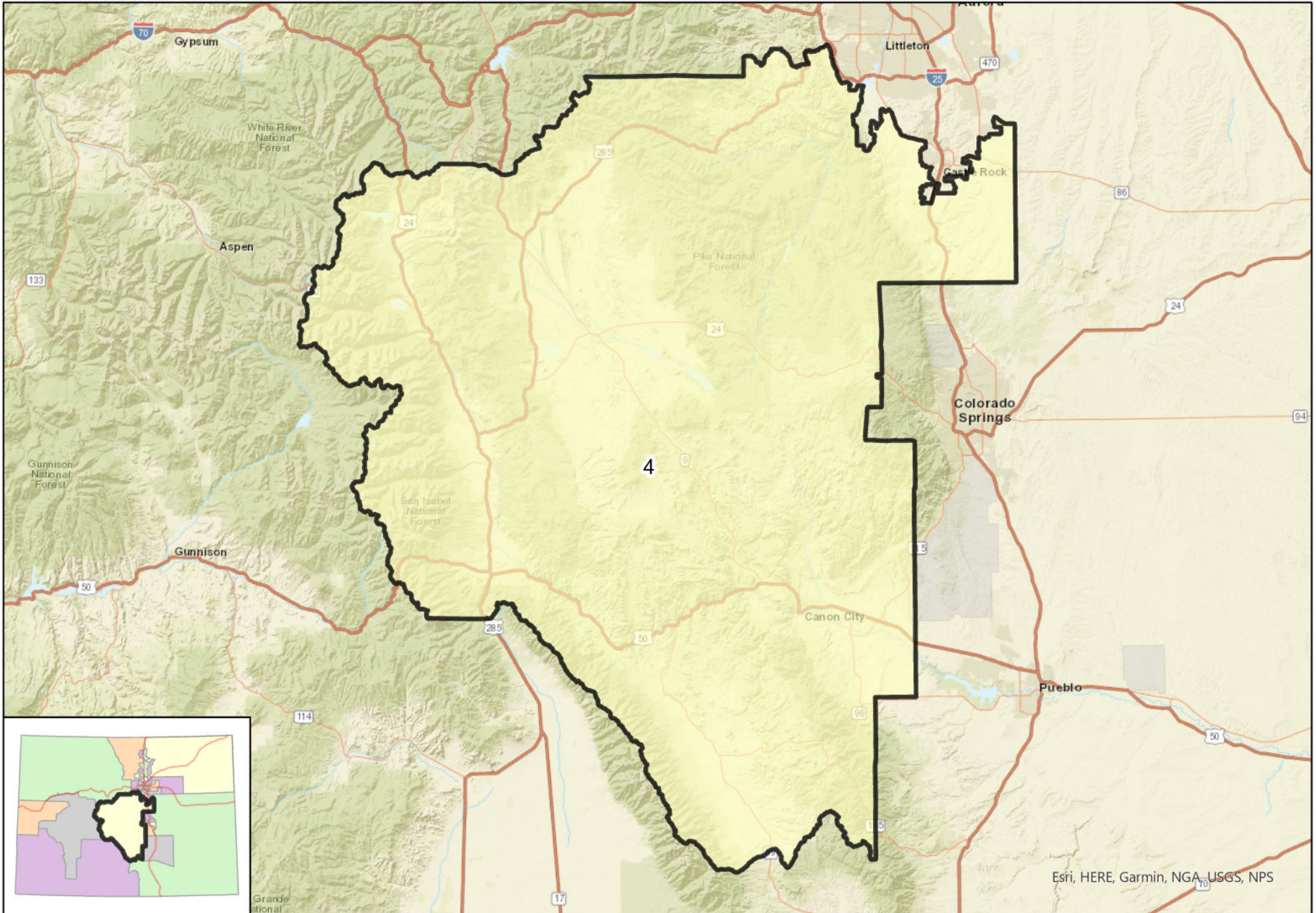


Colorado Senate District 4 (2021)



Map prepared by Colorado Independent Redistricting Commissions Staff.

This map reflects minor map adjustments requested by the Colorado Secretary of State and county clerks, as approved by the Colorado Supreme Court on March 18, 2022.



Colorado Senate District 4 2022-2031

Total Population (2020 Census): 172,499

Race	Percent
White	85.5%
Black or African American	1.5%
American Indian or Alaska Native	1.0%
Asian	0.9%
Native Hawaiian or Other Pacific Islander	0.1%
Some Other Race	3.4%
Multiracial	7.7%

Ethnicity	Percent
Hispanic or Latino	9.5%
Not Hispanic or Latino	90.5%

Voting Age Population: 142,879

Housing Units: 87,980

Percent Occupied: 78.8%

Percent Vacant: 21.2%

Congressional Districts: 4, 7

State House Districts: 13, 25, 39, 44, 45, 60

Counties:

Chaffee	Jefferson
Custer	Lake
Douglas	Park
Fremont	Teller

Largest Municipalities and Communities:

Cañon City
Woodland Park
Salida
Lincoln Park
Florence

School Districts:

School districts with more than 3% of their area in the senate district are included in this list.

Buena Vista, Canon City, Cotopaxi, Cripple Creek, Douglas, Florence, Jefferson, Lake, Park, Platte Canyon, Salida, Westcliffe, Woodland Park

Registered Voters: 128,120

(active as of September 1, 2022)

Affiliation	Voters	Percent
Democrat	23,352	18.2%
Republican	46,841	36.6%
Minor Party	2,368	1.8%
Unaffiliated	55,559	43.4%

Election Differentials:

The commission analyzed the results of eight recent elections, three of which are included here, and reported results in each district as the difference between the percent of votes cast for the Republican candidate and the percent of votes cast for the Democratic candidate. A positive differential means the Republican would have won in the district, and a negative differential means the Democrat would have won in the district.

Election	Differential
2020 U.S. Senate <i>Hickenlooper (D) / Gardner (R)</i>	22.0%
2018 Treasurer <i>Young (D) / Watson (R)</i>	23.3%
2016 President <i>Clinton (D) / Trump (R)</i>	29.8%