



# Legislative District Information After 2011 Reapportionment Senate District 3

**House Districts: 46, 47, 62**

**District Population: 140,106**

County	Population	Percent
Pueblo County	140,106	100%

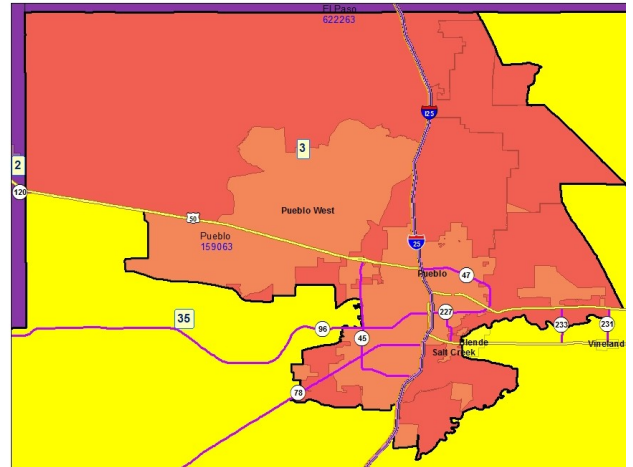
**Registered Voters: 64,684**

Party	Number	Percent
Republican	15,862	24.52%
Democratic	32,082	49.60%
Unaffiliated	16,438	25.41%
Minor Party	302	0.47%

**Voting Age Population: 105,351**

### Population Demographics

Race/Ethnicity	Number	Percent
White-Non Hispanic	71,677	51.16%
Hispanic	61,686	44.03%
Black	3,156	2.25%
American Indian or Alaskan Native	1,650	1.18%
Asian	1,451	1.04%
Hawaiian or Pacific Islander	146	0.10%
Other	340	0.24%



### 2010 Election Results

Election	Party	Number	Percent
U.S. Senate	Republican	17,548	39.20%
	Democratic	25,100	56.07%
	Minor Party	2,114	4.72%
Governor	Republican	5,311	11.79%
	Democratic	26,856	59.62%
	Minor Party	12,878	28.59%
Treasurer	Republican	18,043	41.03%
	Democratic	25,932	58.97%

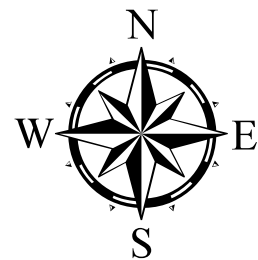
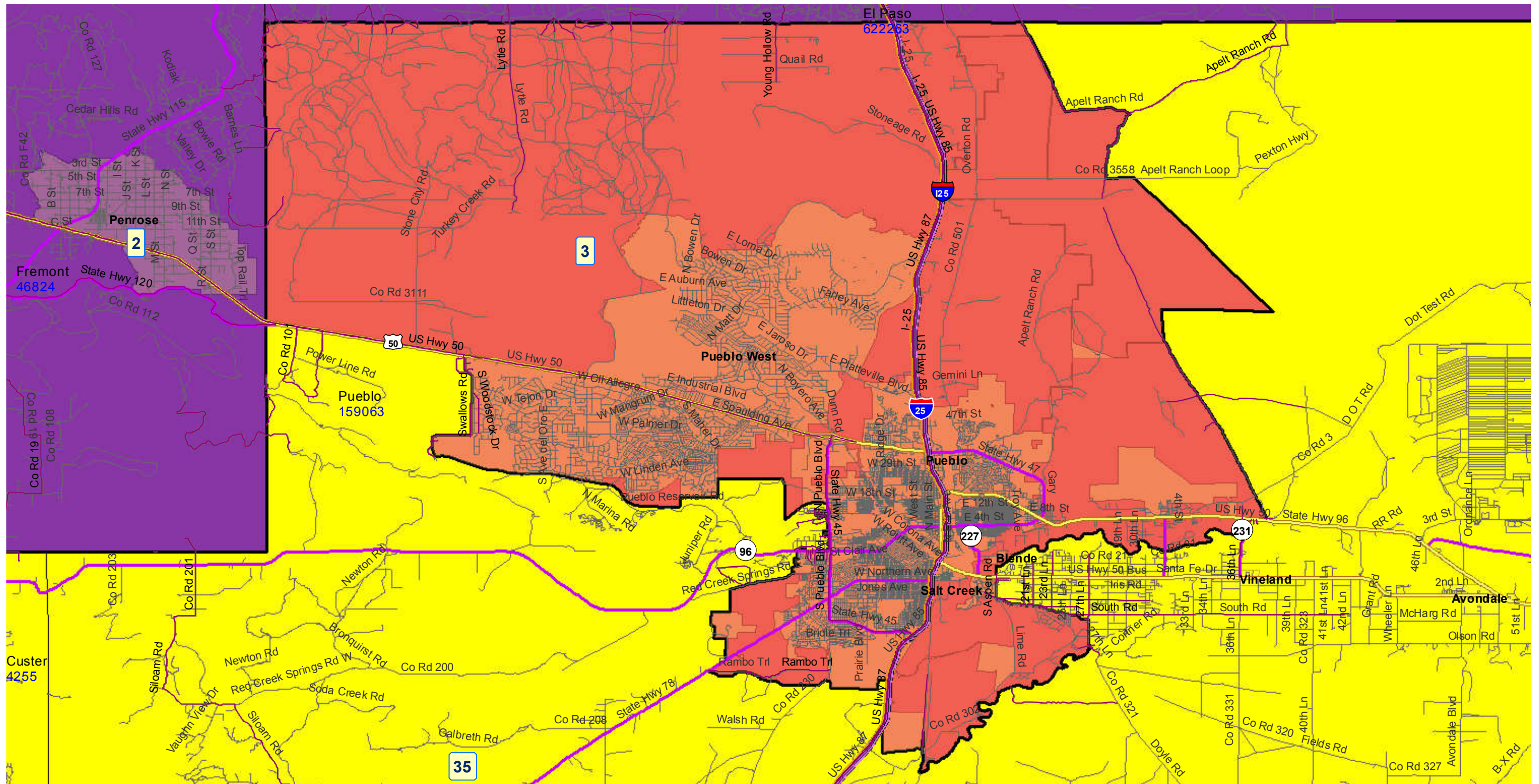
### Communities within district

Pueblo  
Pueblo West  
Salt Creek

### School Districts within district

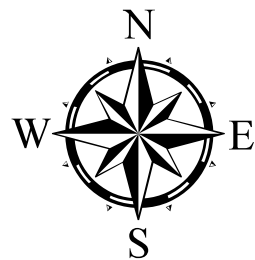
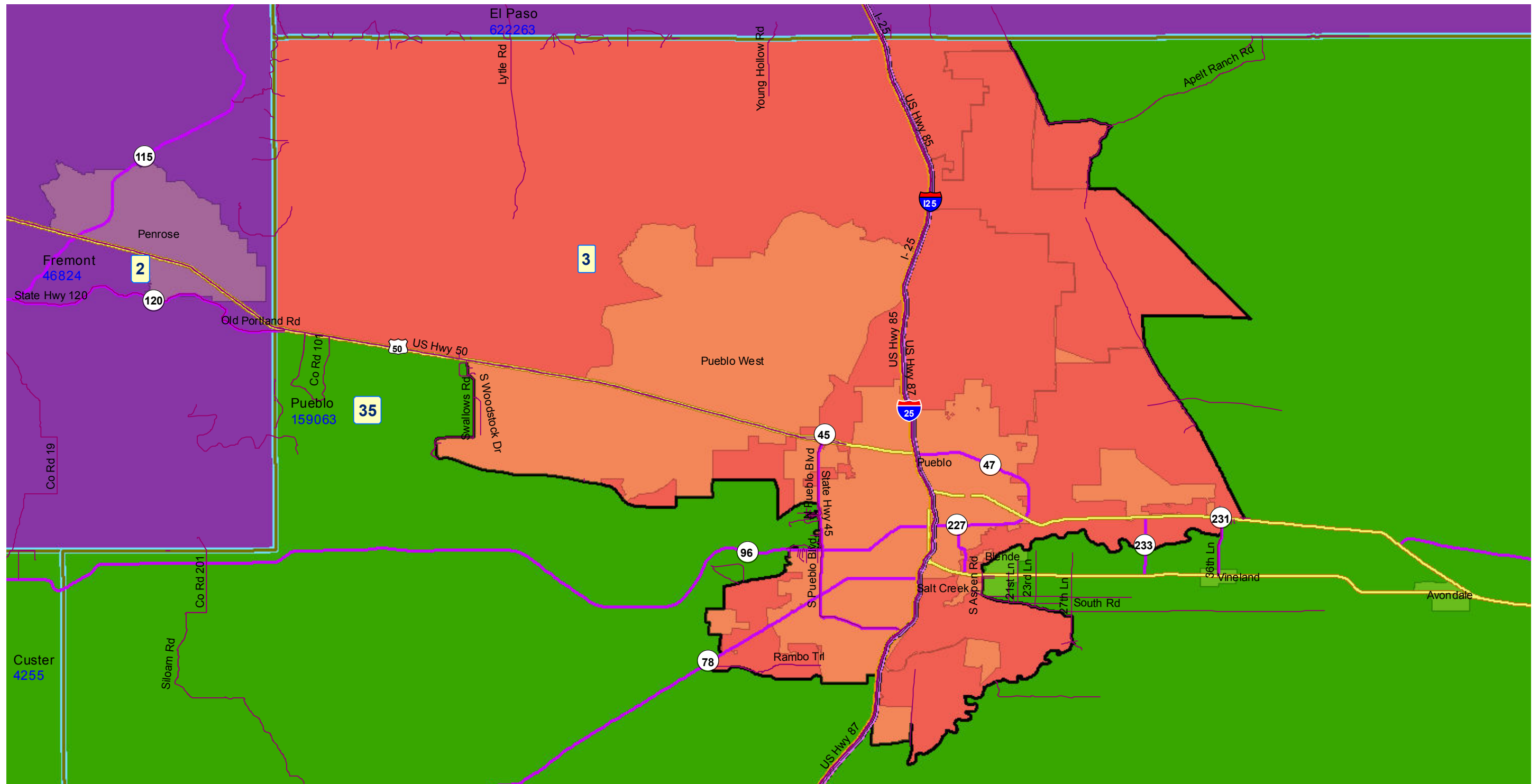
Florence RE-2  
Hanover 28  
Pueblo 60  
Pueblo County Rural 70

# Senate District 3 After 2011 Reapportionment



Prepared by Reapportionment Commission Staff  
December 2011

# Senate District 3 After 2011 Reapportionment



Prepared by Reapportionment Commission Staff  
December 2011