



Legislative District Information

After 2011 Reapportionment

House District 45

Senate Districts: 4, 30

District Population: 76,791

County	Population	Percent
Douglas County	76,791	100%

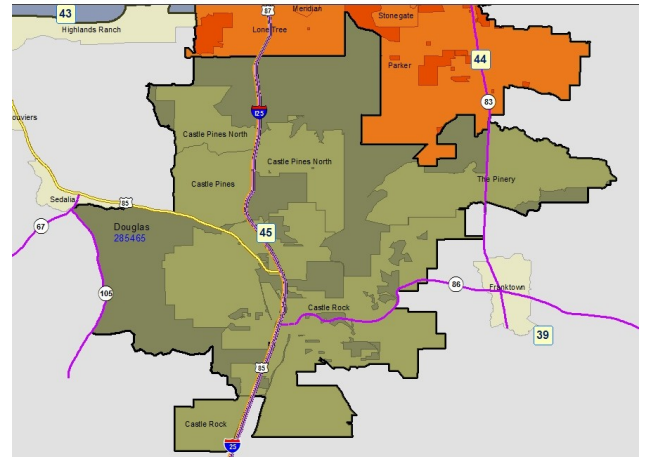
Registered Voters: 43,417

Party	Number	Percent
Republican	22,229	51.20%
Democratic	8,246	18.99%
Unaffiliated	12,696	29.24%
Minor Party	246	0.57%

Voting Age Population: 52,664

Population Demographics

Race/Ethnicity	Number	Percent
White-Non Hispanic	66,442	86.52%
Hispanic	6,231	8.11%
Black	1,211	1.58%
American Indian or Alaskan Native	576	0.75%
Asian	2,058	2.68%
Hawaiian or Pacific Islander	109	0.14%
Other	164	0.21%



2010 Election Results

Election	Party	Number	Percent
U.S. Senate	Republican	20,137	63.41%
	Democratic	10,307	32.46%
	Minor Party	1,312	4.13%
Governor	Republican	3,845	12.00%
	Democratic	11,849	36.99%
	Minor Party	16,338	51.00%
Treasurer	Republican	21,036	68.22%
	Democratic	9,797	31.78%

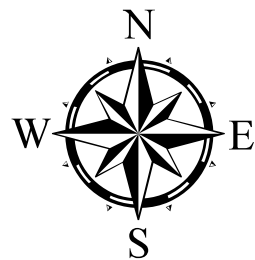
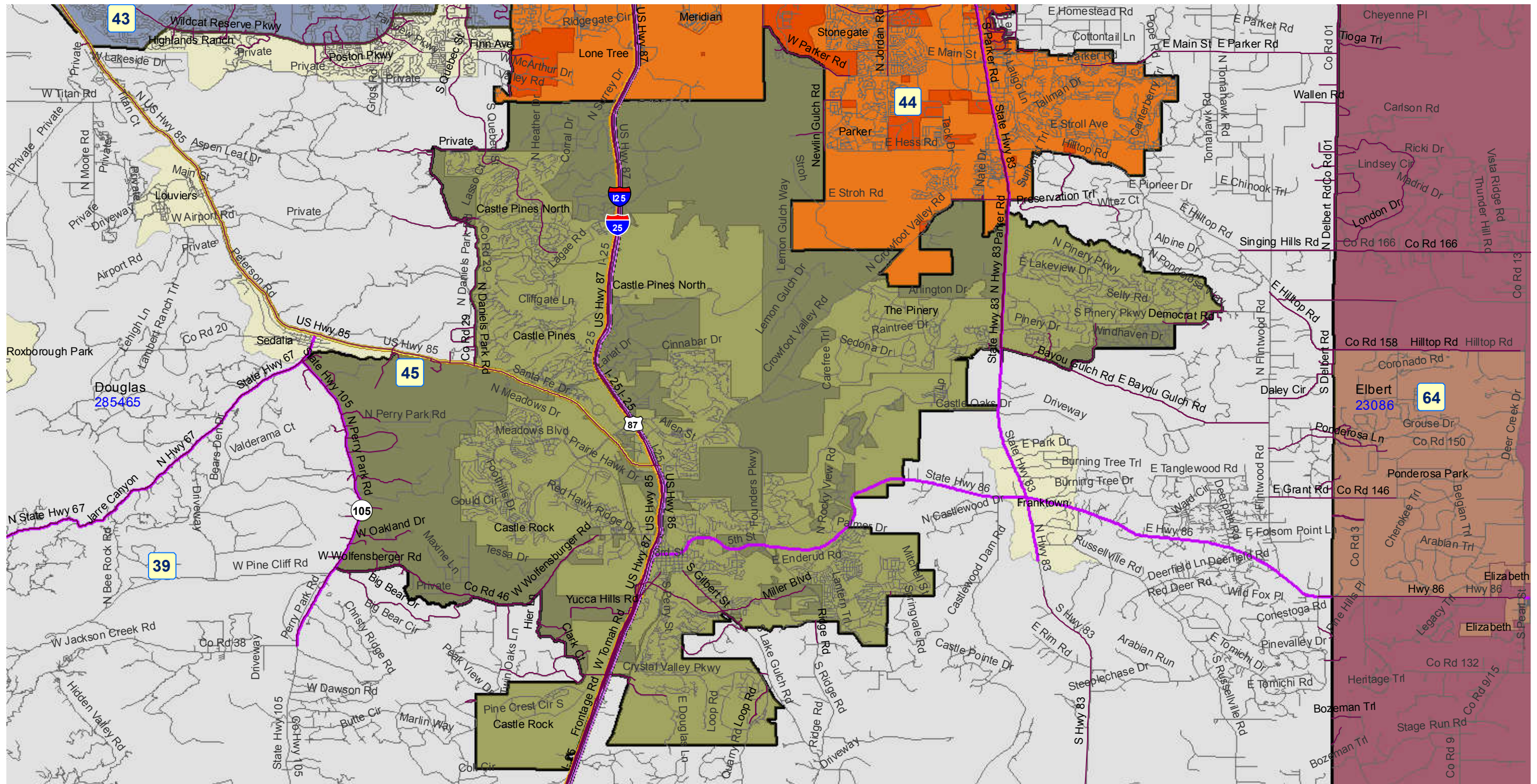
Communities within district

- Castle Pines
- Castle Pines North
- Castle Rock
- The Pinery

School Districts within district

- Douglas County RE 1

House District 45 After 2011 Reapportionment



Prepared by Reapportionment Commission Staff
December 2011

