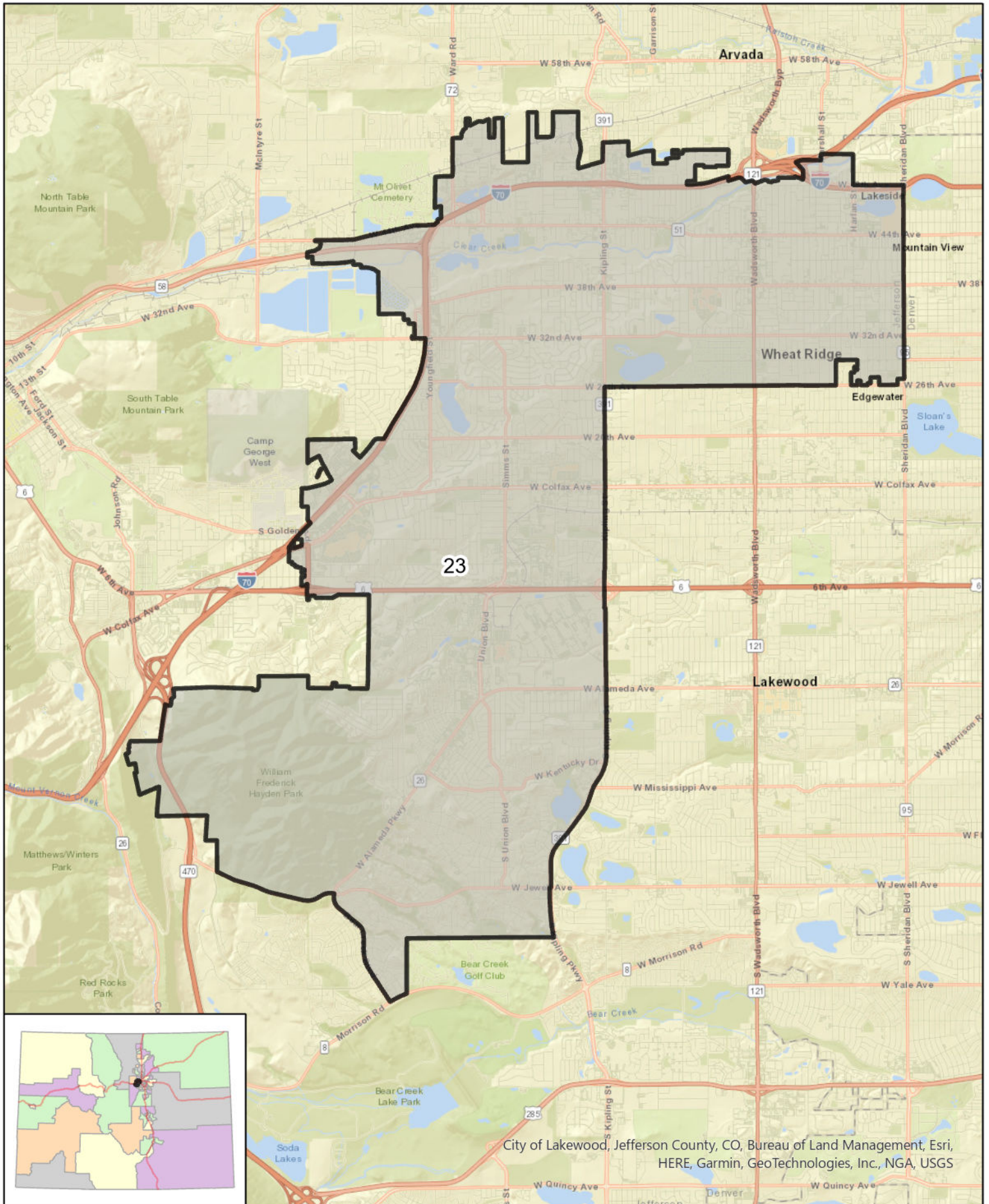
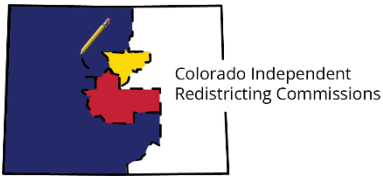


Colorado House District 23 (2021)



Map prepared by Colorado Independent Redistricting Commissions Staff.

This map reflects minor map adjustments requested by the Colorado Secretary of State and county clerks, as approved by the Colorado Supreme Court on March 18, 2022.



Colorado House District 23

2022-2031

Total Population (2020 Census): 87,283

Race	Percent
White	77.5%
Black or African American	1.5%
American Indian or Alaska Native	1.4%
Asian	2.7%
Native Hawaiian or Other Pacific Islander	0.1%
Some Other Race	5.3%
Multiracial	11.6%

Ethnicity	Percent
Hispanic or Latino	17.4%
Not Hispanic or Latino	82.6%

Voting Age Population: 72,384

Housing Units: 41,137
Percent Occupied: 94.9%
Percent Vacant: 5.1%

Congressional Districts: 7
State Senate Districts: 20, 22

Counties:
 Jefferson

Largest Municipalities and Communities:
 Lakewood
 Wheat Ridge
 Applewood
 Mountain View
 East Pleasant View

School Districts:

School districts with more than 3% of their area in the house district are included in this list.

Jefferson

Registered Voters: 61,833
 (active as of September 1, 2022)

Affiliation	Voters	Percent
Democrat	20,254	32.8%
Republican	11,703	18.9%
Minor Party	1,217	2.0%
Unaffiliated	28,659	46.3%

Election Differentials:

The commission analyzed the results of eight recent elections, three of which are included here, and reported results in each district as the difference between the percent of votes cast for the Republican candidate and the percent of votes cast for the Democratic candidate. A positive differential means the Republican would have won in the district, and a negative differential means the Democrat would have won in the district.

Election	Differential
2020 U.S. Senate <i>Hickenlooper (D) / Gardner (R)</i>	-25.3%
2018 Treasurer <i>Young (D) / Watson (R)</i>	-21.8%
2016 President <i>Clinton (D) / Trump (R)</i>	-17.6%