



Legislative District Information After 2011 Reapportionment Senate District 5

House Districts: 26, 54, 59, 60, 61

District Population: 141,583

County	Population	Percent
Eagle County	52,197	36.87%
Delta County	30,952	21.86%
Chaffee County	17,809	12.58%
Pitkin County	17,148	12.11%
Gunnison County	15,324	10.82%
Lake County	7,310	5.16%
Hinsdale County	843	0.60%

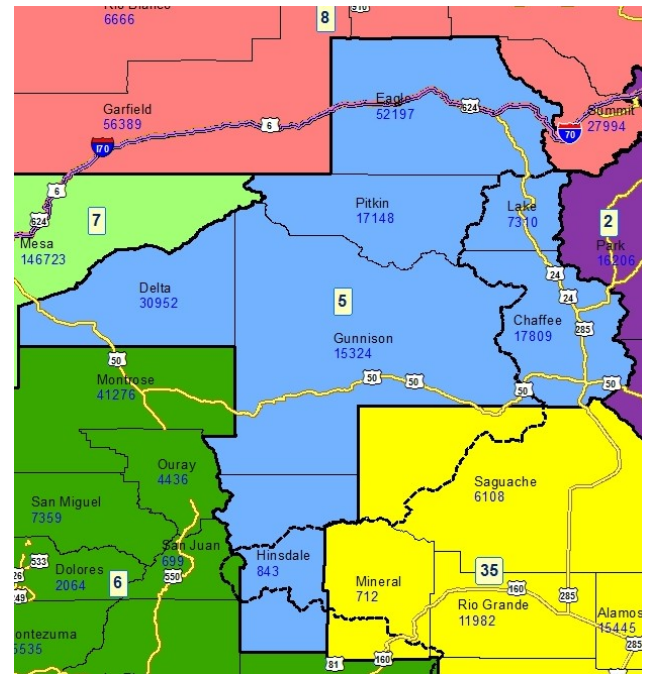
Registered Voters: 71,168

Party	Number	Percent
Republican	24,352	34.22%
Democratic	21,318	29.95%
Unaffiliated	24,816	34.87%
Minor Party	682	0.96%

Voting Age Population: 111,175

Population Demographics

Race/Ethnicity	Number	Percent
White-Non Hispanic	109,970	77.67%
Hispanic	27,410	19.36%
Black	1,081	0.76%
American Indian or Alaskan Native	1,243	0.88%
Asian	1,513	1.07%
Hawaiian or Pacific Islander	120	0.08%
Other	246	0.17%



2010 Election Results

Election	Party	Number	Percent
U.S. Senate	Republican	23,347	44.72%
	Democratic	25,534	48.91%
	Minor Party	3,328	6.37%
Governor	Republican	8,962	17.05%
	Democratic	28,008	53.29%
	Minor Party	15,583	29.65%
Treasurer	Republican	25,621	51.57%
	Democratic	24,065	48.43%

Communities within district

- Aspen
- Avon
- Basalt
- Buena Vista
- Cathedral
- Cedaredge
- Crawford

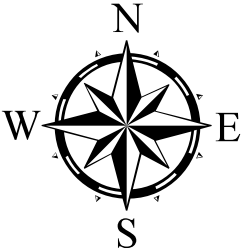
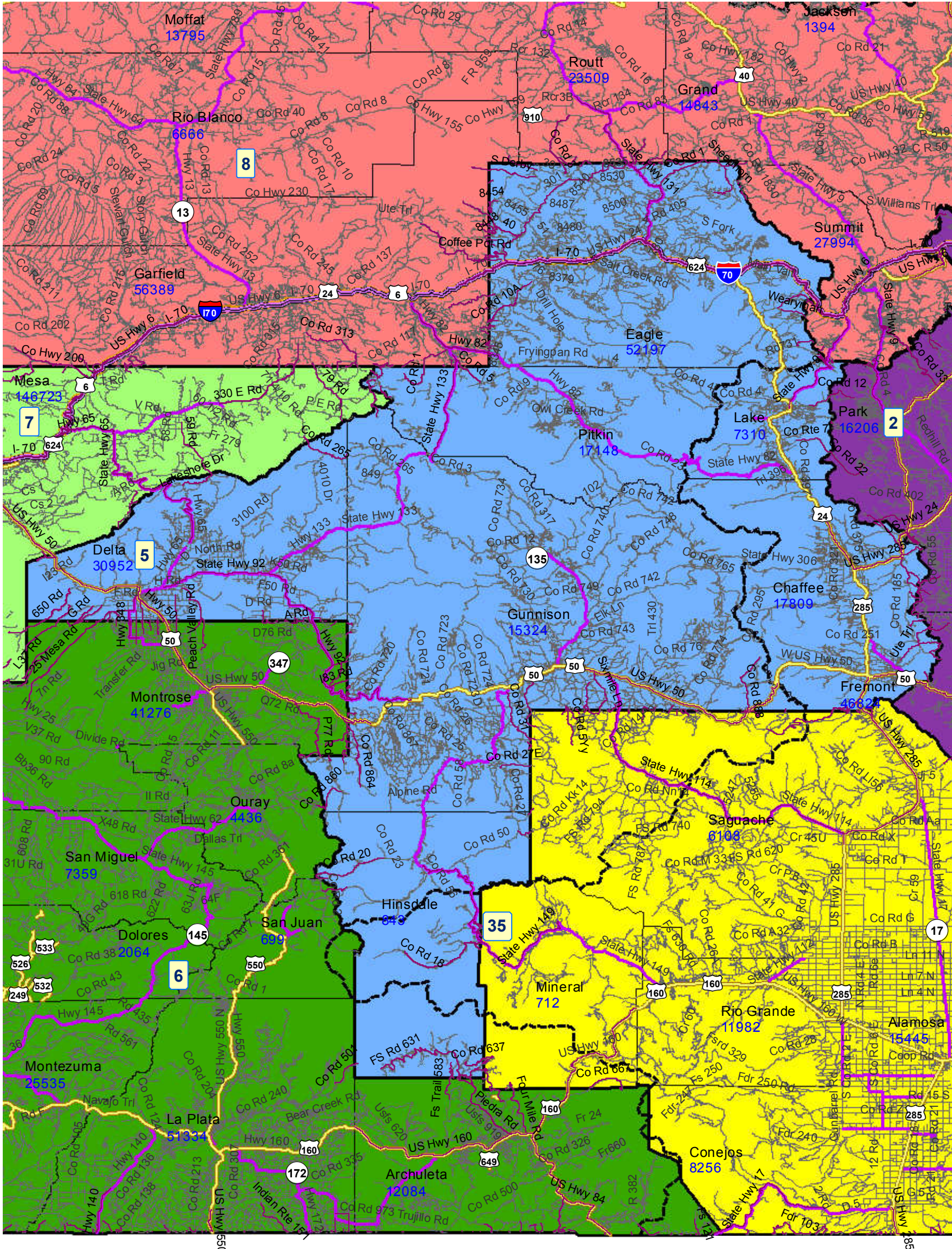
Crested Butte
Delta
Dotsero
Eagle
Edwards
El Jebel
Fulford
Garfield
Gunnison
Gypsum
Hotchkiss
Johnson Village
Lake City
Leadville
Leadville North
Marble
Maysville
McCoy
Minturn
Mount Crested Butte
Norrie
Orchard City
Paonia
Piedra
Pitkin
Poncha Springs
Red Cliff
Redstone
Salida
Smelertown
Snowmass Village
Twin Lakes
Vail
Wolcott
Woody Creek

School Districts within district

Archuleta County 50 JT
Aspen 1
Bayfield 10 JT-R
Buena Vista R-31
Creed Consolidated 1
Delta County 50(J)
Eagle County RE 50

Gunnison Watershed RE1J
Hinsdale County RE-1
Lake County R-1
Mesa County Valley 51
Montrose County RE-1J
Mountain Valley RE 1
Ouray R-1
Park County RE-2
Plateau Valley 50
Ridgway R-2
Roaring Fork RE-1
Salida R-32
Silverton 1
South Routt RE 3
Summit RE-1
West Grand 1-JT

Senate District 5 After 2011 Reapportionment



Senate District 5 After 2011 Reapportionment

