



Legislative District Information After 2011 Reapportionment Senate District 4

House Districts: 39, 44, 45

District Population: 142,188

County	Population	Percent
Douglas County	142,188	100%

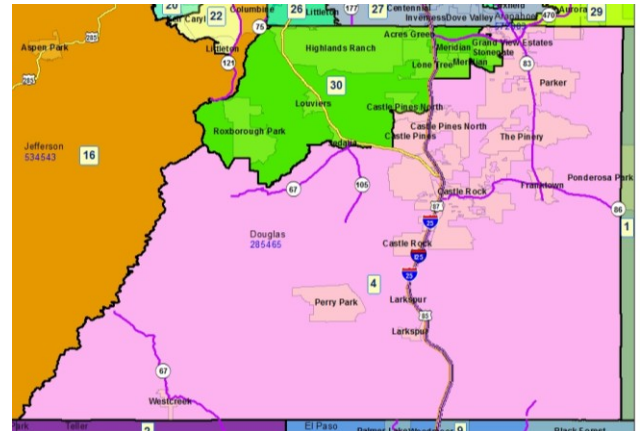
Registered Voters: 79,289

Party	Number	Percent
Republican	39,631	49.98%
Democratic	15,635	19.72%
Unaffiliated	23,580	29.74%
Minor Party	443	0.56%

Voting Age Population: 99,331

Population Demographics

Race/Ethnicity	Number	Percent
White-Non Hispanic	122,997	86.50%
Hispanic	11,006	7.74%
Black	2,327	1.64%
American Indian or Alaskan Native	1,058	0.74%
Asian	4,350	3.06%
Hawaiian or Pacific Islander	205	0.14%
Other	245	0.17%



2010 Election Results

Election	Party	Number	Percent
U.S. Senate	Republican	36,207	62.66%
	Democratic	18,941	32.78%
	Minor Party	2,635	4.56%
Governor	Republican	6,619	11.35%
	Democratic	21,277	36.48%
	Minor Party	30,428	52.17%
Treasurer	Republican	37,934	67.60%
	Democratic	18,177	32.40%

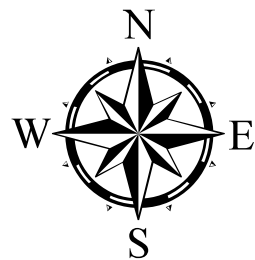
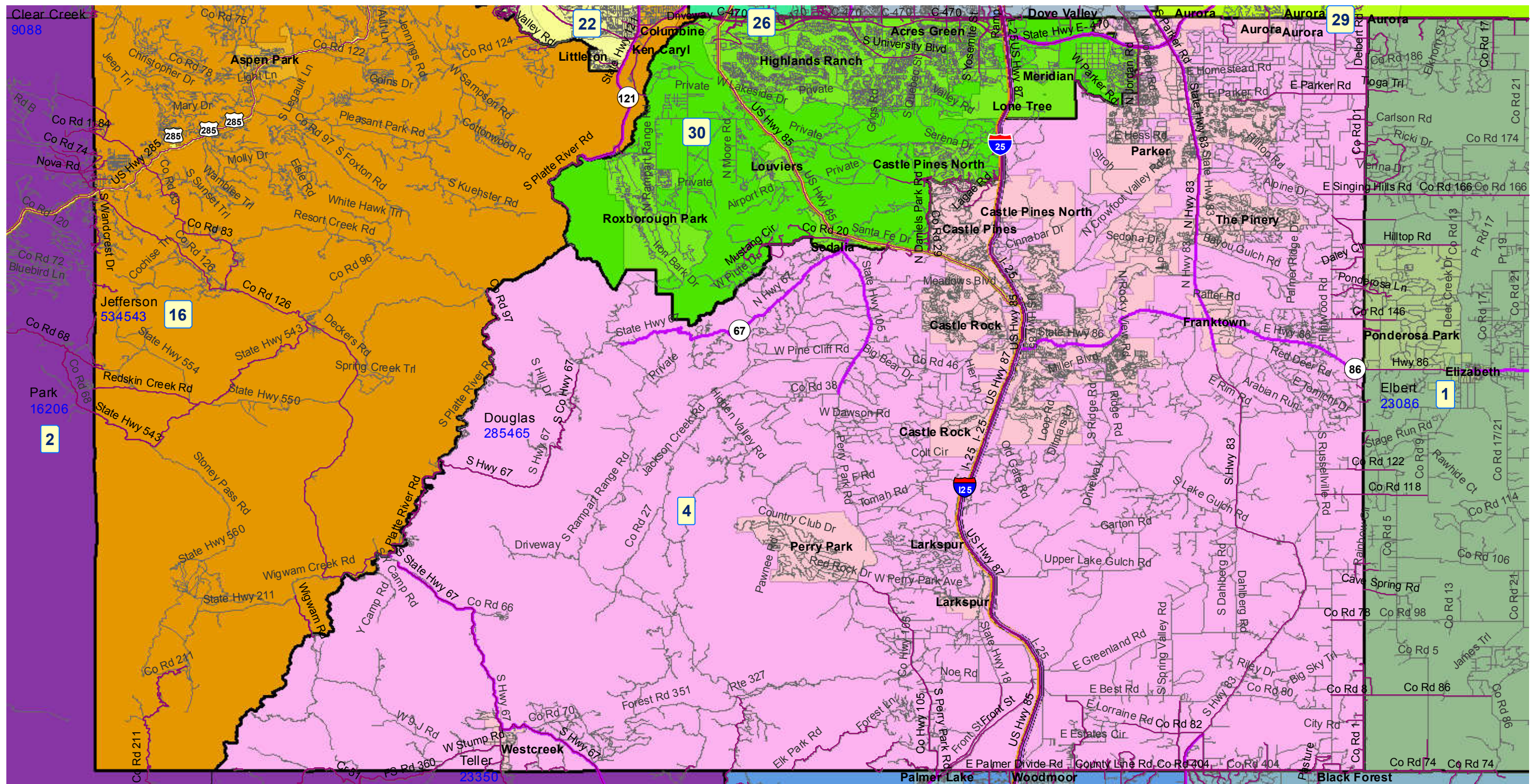
Communities within district

- Aurora
- Castle Pines
- Castle Pines North
- Castle Rock
- Franktown
- Larkspur
- Parker
- Perry Park
- The Pinery
- Westcreek

School Districts within district

Cherry Creek 5
Douglas County RE 1
Elbert 200
Elizabeth C-1
Jefferson County R-1
Lewis-Palmer 38
Woodland Park RE-2

Senate District 4 After 2011 Reapportionment



Prepared by Reapportionment Commission Staff
December 2011

