



# Legislative District Information After 2011 Reapportionment House District 59

**Senate Districts: 5, 6**

**District Population: 77,432**

County	Population	Percent
La Plata County	51,334	66%
Archuleta County	12,084	16%
Gunnison County	8,036	10%
Ouray County	4,436	6%
Hinsdale County	843	1%
San Juan County	699	1%

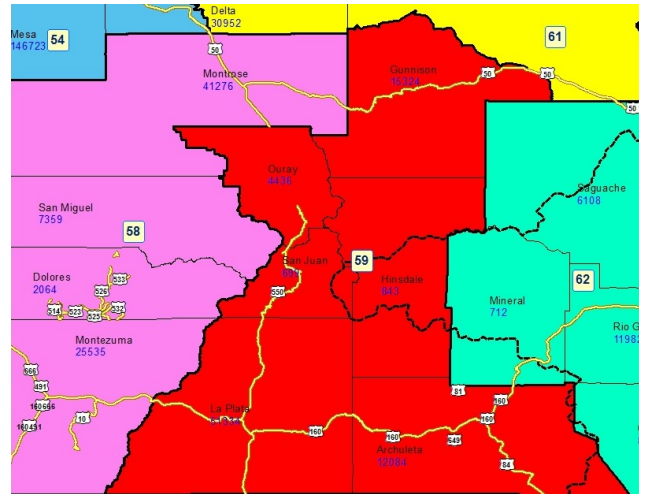
**Registered Voters: 44,201**

Party	Number	Percent
Republican	16,780	37.96%
Democratic	13,712	31.02%
Unaffiliated	13,178	29.81%
Minor Party	531	1.20%

**Voting Age Population: 62,064**

**Population Demographics**

Race/Ethnicity	Number	Percent
White-Non Hispanic	63,065	81.45%
Hispanic	9,441	12.19%
Black	492	0.64%
American Indian or Alaskan Native	3,557	4.59%
Asian	658	0.85%
Hawaiian or Pacific Islander	66	0.09%
Other	153	0.20%



**2010 Election Results**

Election	Party	Number	Percent
U.S. Senate	Republican	15,157	46.87%
	Democratic	15,554	48.10%
	Minor Party	1,626	5.03%
Governor	Republican	8,011	24.81%
	Democratic	16,695	51.71%
	Minor Party	7,581	23.48%
Treasurer	Republican	15,931	51.88%
	Democratic	14,775	48.12%

**Communities within district**

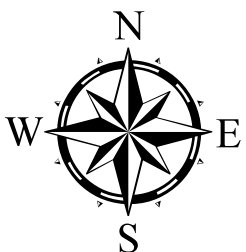
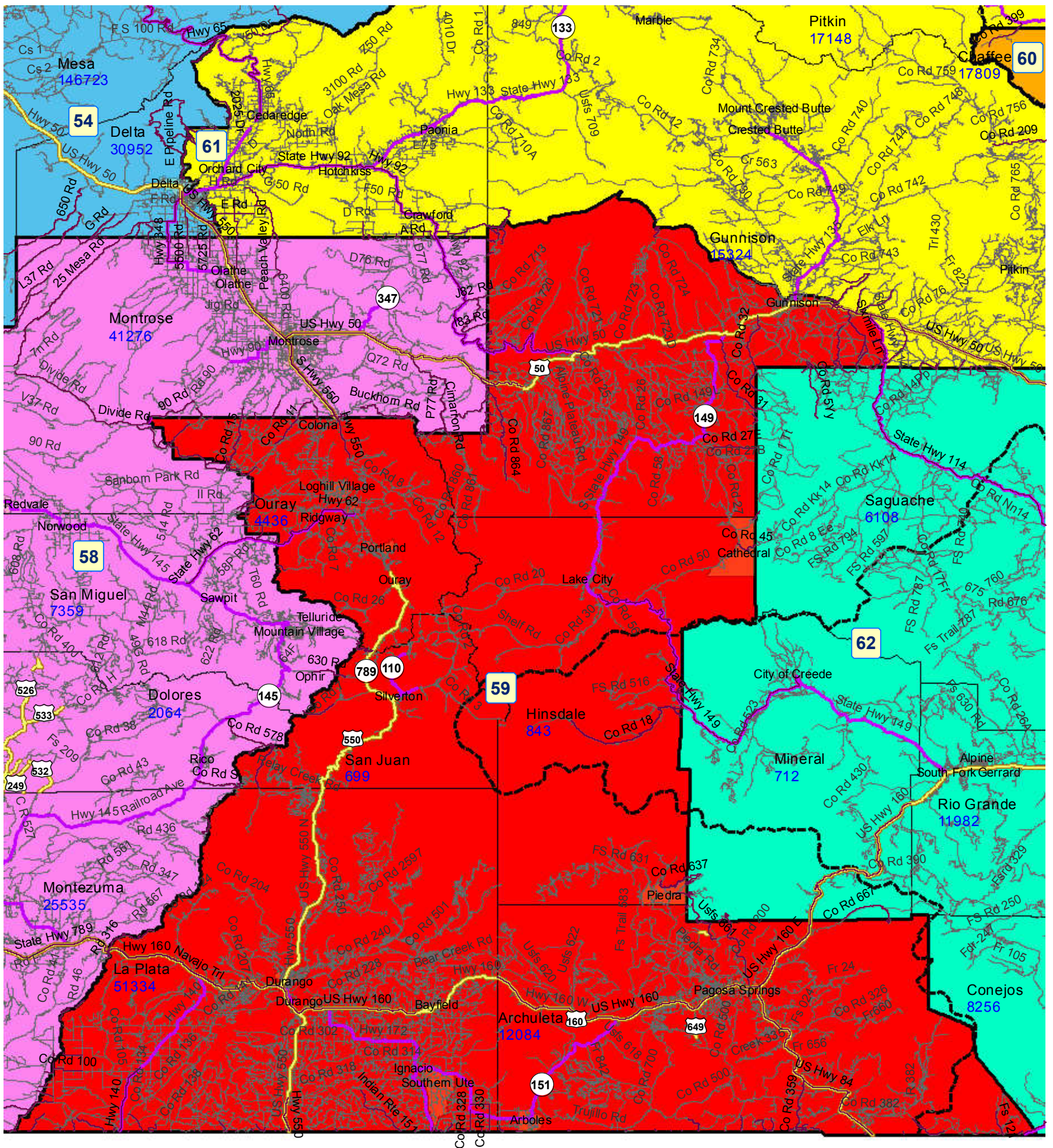
- Arboles
- Bayfield
- Cathedral
- Colona
- Durango
- Gunnison
- Ignacio
- Lake City
- Loghill Village
- Ouray
- Pagosa Springs
- Piedra

Portland  
Ridgway  
Silverton  
Southern Ute

**School Districts within district**

Archuleta County 50 JT  
Bayfield 10 JT-R  
Creed Consolidated 1  
Delta County 50(J)  
Dolores County RE NO.2  
Dolores RE-4A  
Durango 9-R  
Gunnison Watershed  
RE1J  
Hinsdale County RE-1  
Ignacio 11 JT  
Mancos RE-6  
Montezuma-Cortez RE-1  
Montrose County RE-1J  
North Conejos RE-1J  
Ouray R-1  
Ridgway R-2  
Silverton 1  
South Conejos RE-10  
Telluride R-1

# House District 59 After 2011 Reapportionment



# House District 59 After 2011 Reapportionment

