



# Legislative District Information

## After 2011 Reapportionment

### House District 62

**Senate Districts: 3, 35**

**District Population: 78,435**

County	Population	Percent
Pueblo County	25,697	33%
Alamosa County	15,445	20%
Rio Grande County	11,982	15%
Conejos County	8,256	11%
Huerfano County	6,711	9%
Saguache County	6,108	8%
Costilla County	3,524	4%
Mineral County	712	1%

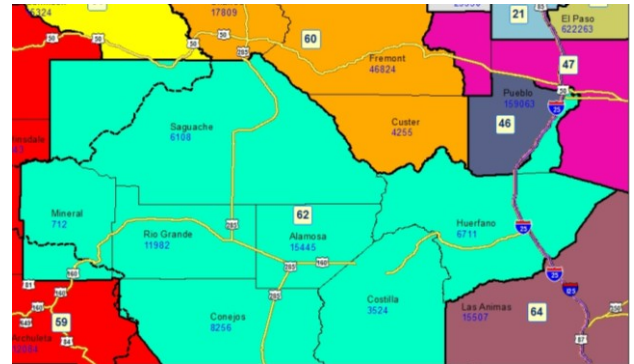
**Registered Voters: 37,019**

Party	Number	Percent
Republican	10,370	28.01%
Democratic	18,669	50.43%
Unaffiliated	7,790	21.04%
Minor Party	190	0.51%

**Voting Age Population: 59,002**

**Population Demographics**

Race/Ethnicity	Number	Percent
White-Non Hispanic	36,428	46.44%
Hispanic	39,376	50.20%
Black	698	0.89%
American Indian or Alaskan Native	1,125	1.43%
Asian	550	0.70%
Hawaiian or Pacific Islander	65	0.08%
Other	193	0.25%



**2010 Election Results**

Election	Party	Number	Percent
U.S. Senate	Republican	10,291	38.56%
	Democratic	14,896	55.81%
	Minor Party	1,502	5.63%
Governor	Republican	4,259	15.77%
	Democratic	15,991	59.21%
	Minor Party	6,757	25.02%
Treasurer	Republican	10,710	41.39%
	Democratic	15,166	58.61%

**Communities within district**

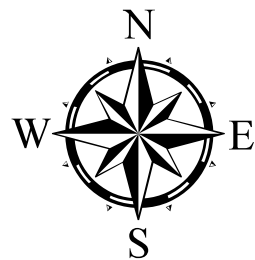
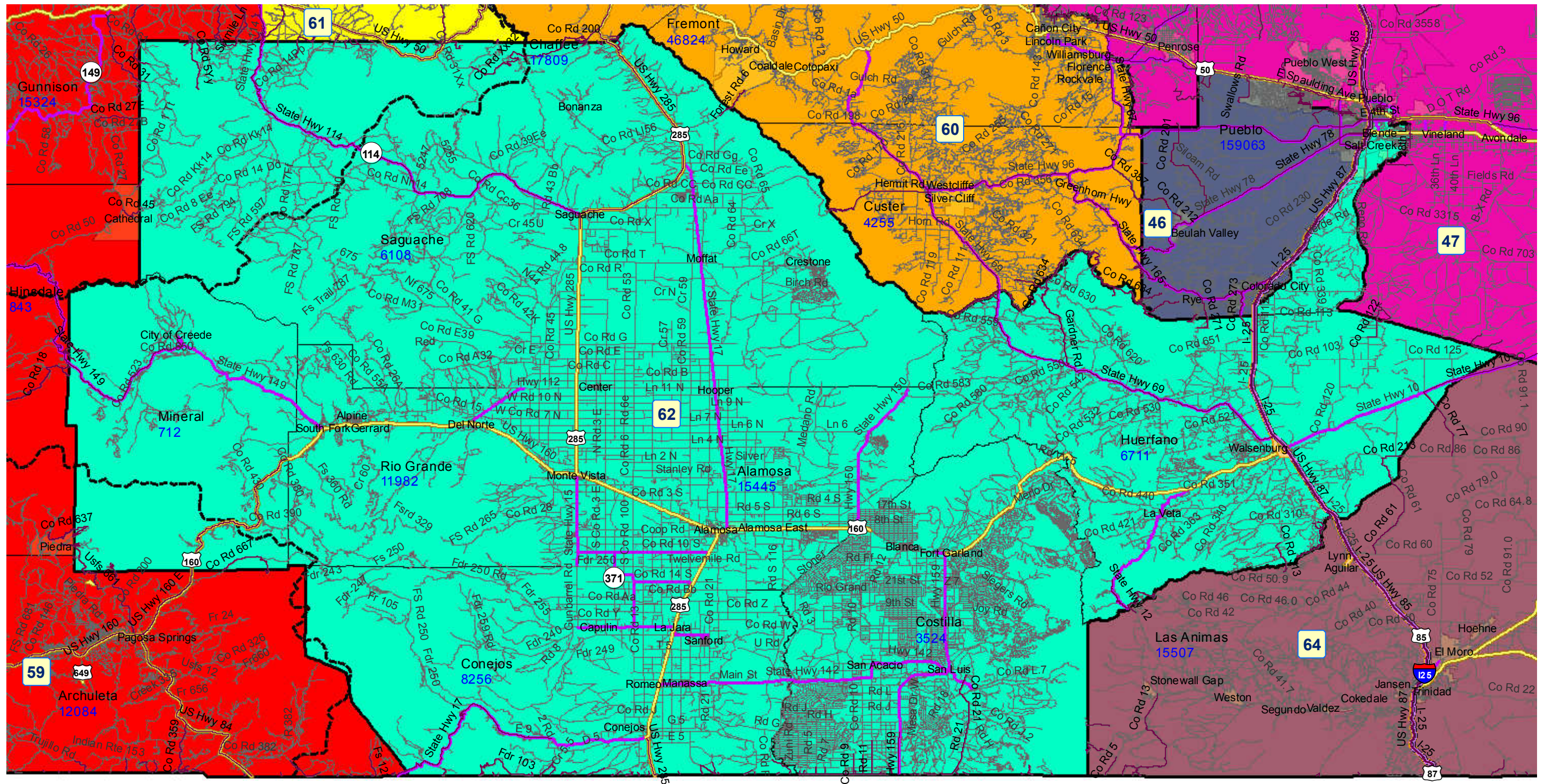
- Alamosa
- Alamosa East
- Alpine
- Antonito
- Blanca
- Blende
- Bonanza
- Capulin
- Center
- City of Creede
- Conejos
- Crestone
- Del Norte
- Fort Garland
- Gerrard
- Hooper

La Jara  
La Veta  
Manassa  
Moffat  
Monte Vista  
Pueblo  
Romeo  
Saguache  
Salt Creek  
San Acacio  
San Luis  
Sanford  
South Fork  
Walsenburg

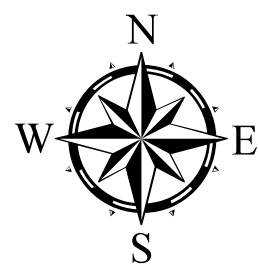
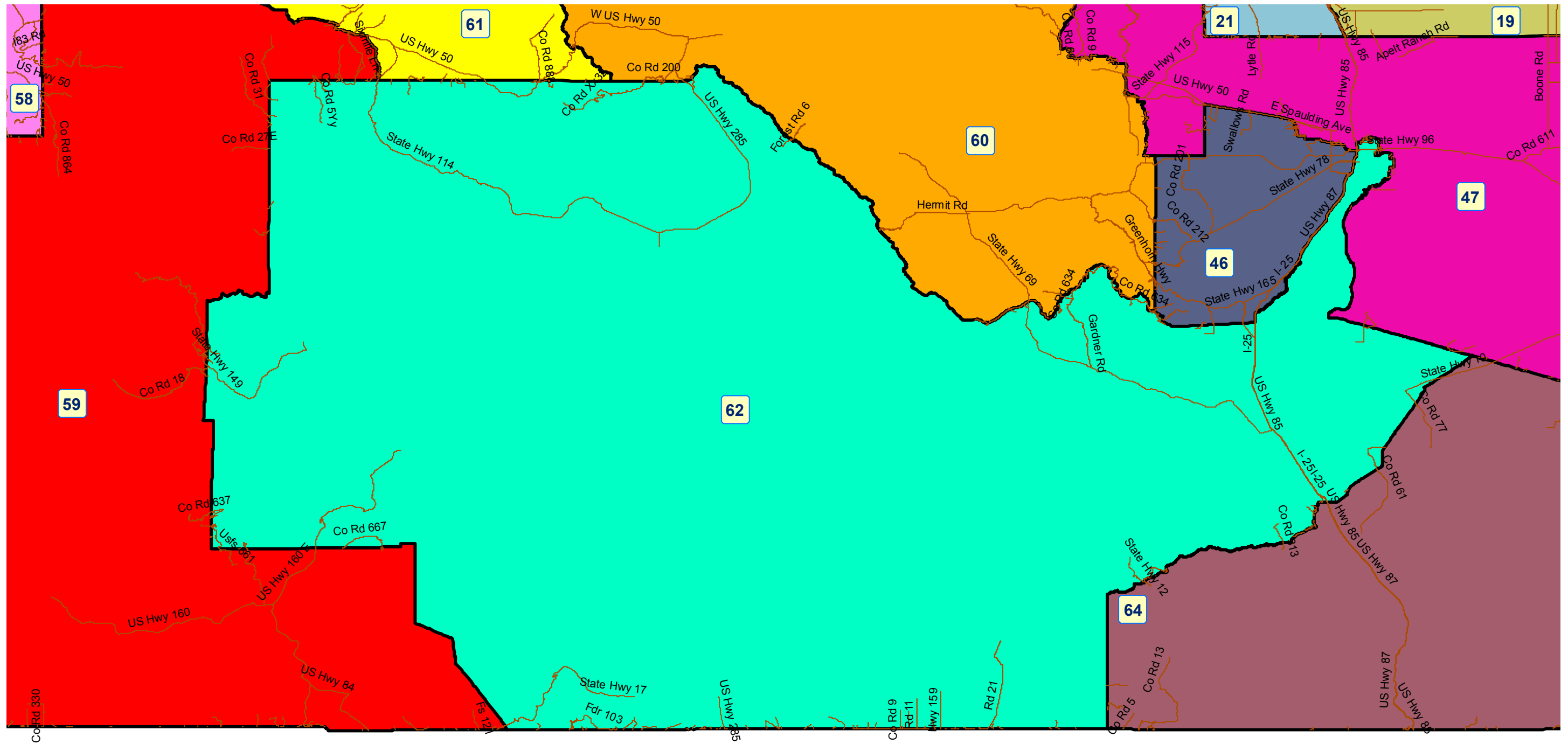
**School Districts within district**

Aguilar Reorganized 6  
Alamosa RE-11J  
Archuleta County 50 JT  
Centennial R-1  
Center 26 JT  
Cotopaxi RE-3  
Creed Consolidated 1  
Custer County. C-1  
Del Norte C-7  
Fowler R-4J  
Gunnison Watershed RE1J  
Hinsdale County RE-1  
Huerfano RE-1  
La Veta RE-2  
Moffat 2  
Monte Vista C-8  
Mountain Valley RE 1  
North Conejos RE-1J  
Primero Reorganized 2  
Pueblo 60  
Pueblo County Rural 70  
Salida R-32  
Sanford 6J  
Sangre de Cristo RE-22J  
Sargent RE-33J  
Sierra Grande R-30  
South Conejos RE-10

# House District 62 After 2011 Reapportionment



# House District 62 After 2011 Reapportionment



Prepared by Reapportionment Commission Staff  
December 2011