



# Legislative District Information After 2011 Reapportionment Senate District 18

**House Districts: 10, 11, 12, 13, 33**

**District Population: 140,144**

County	Population	Percent
Boulder	140,144	100.00%

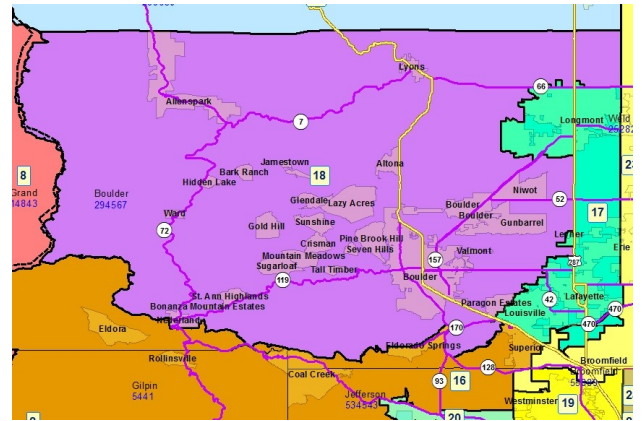
**Registered Voters: 80,542**

Party	Number	Percent
Republican	12,448	15.46%
Democratic	40,169	49.87%
Unaffiliated	26,983	33.50%
Minor Party	942	1.17%

**Voting Age Population: 118,101**

**Population Demographics**

Race/Ethnicity	Number	Percent
White-Non Hispanic	119,579	85.33%
Hispanic	10,528	7.51%
Black	1,616	1.15%
American Indian or Alaskan Native	976	0.70%
Asian	6,986	4.98%
Hawaiian or Pacific Islander	148	0.11%
Other	311	0.22%



**2010 Election Results**

Election	Party	Number	Percent
U.S. Senate	Republican	13,004	20.39%
	Democratic	48,424	75.94%
	Minor Party	2,342	3.67%
Governor	Republican	2,425	3.81%
	Democratic	49,975	78.51%
	Minor Party	11,253	17.68%
Treasurer	Republican	14,329	23.72%
	Democratic	46,083	76.28%

**Communities within district**

- Allenspark
- Altona
- Bark Ranch
- Bonanza Mountain Estates
- Boulder
- Crisman
- Glendale
- Gold Hill
- Gunbarrel
- Hidden Lake
- Jamestown
- Lazy Acres
- Lyons
- Mountain Meadows
- Nederland

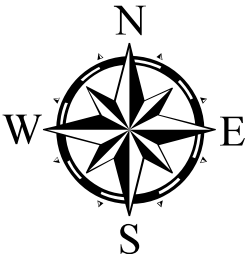
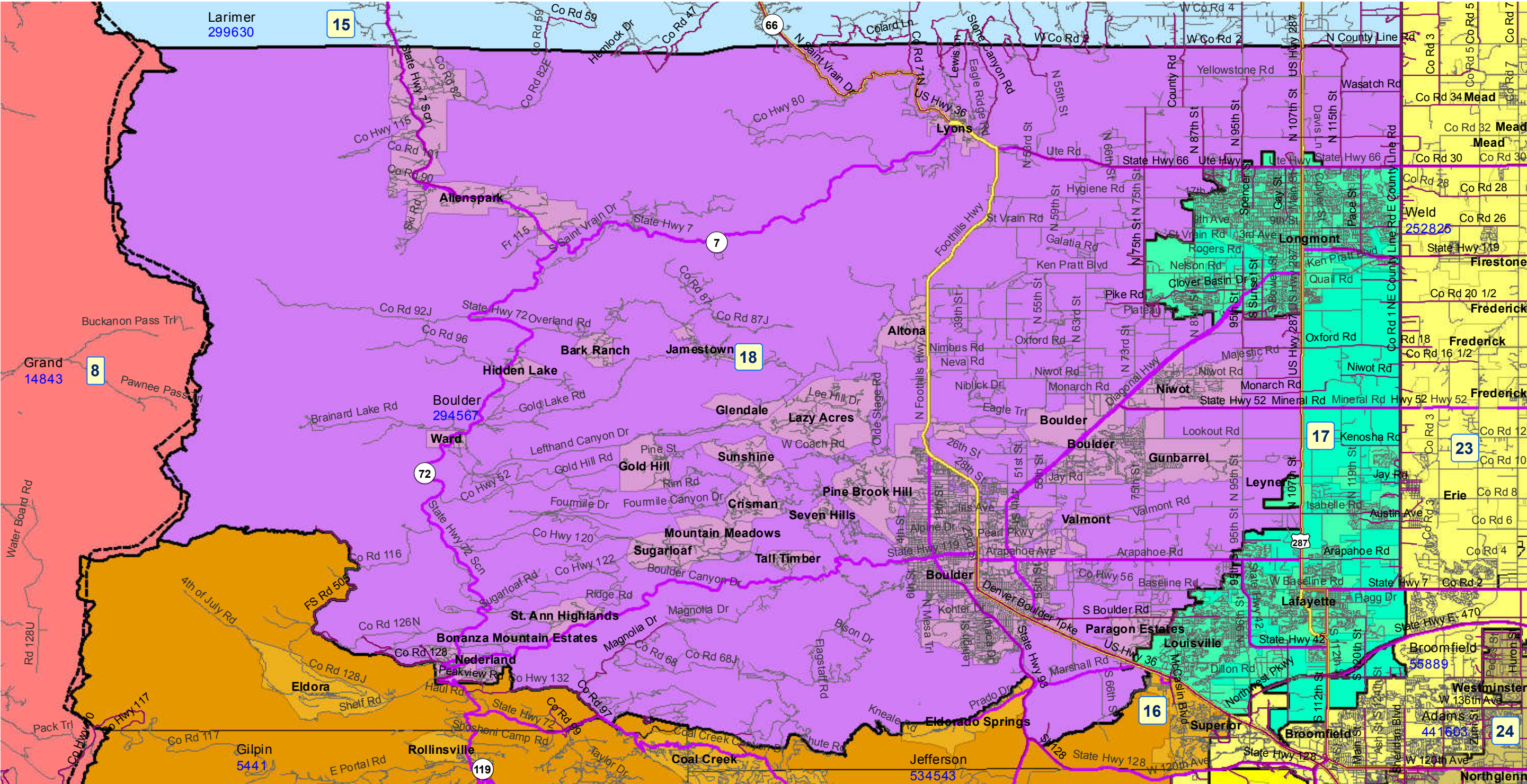
Niwot  
Paragon Estates  
Pine Brook Hill  
Seven Hills  
St. Ann Highlands  
Sugarloaf  
Sunshine  
Tall Timber  
Valmont  
Ward

***School Districts within district***

---

Boulder Valley RE 2  
East Grand 2  
Park (Estes Park) R-3  
St Vrain Valley RE 1J  
Thompson R-2J

# Senate District 18 After 2011 Reapportionment



# Senate District 18 After 2011 Reapportionment

