



Legislative District Information After 2011 Reapportionment Senate District 16

House Districts: 1, 13, 22, 24, 25, 27, 33

District Population: 146,853

County	Population	Percent
Jefferson County	99,136	67.51%
Denver County	27,983	19.06%
Boulder County	14,293	9.73%
Gilpin County	5,441	3.71%

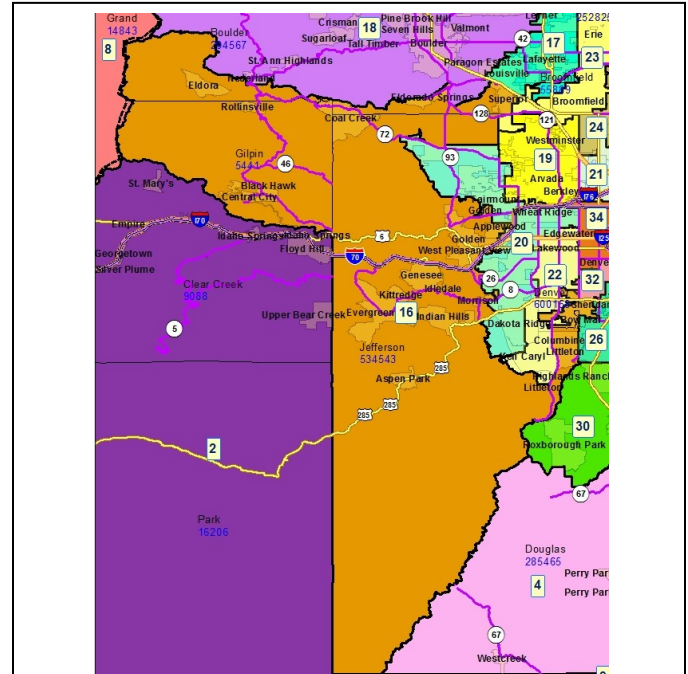
Registered Voters: 86,407

Party	Number	Percent
Republican	30,797	35.64%
Democratic	26,812	31.03%
Unaffiliated	28,139	32.57%
Minor Party	659	0.76%

Voting Age Population: 114,884

Population Demographics

Race/Ethnicity	Number	Percent
White-Non Hispanic	122,859	83.66%
Hispanic	14,700	10.01%
Black	1,581	1.08%
American Indian or Alaskan Native	1,162	0.79%
Asian	6,127	4.17%
Hawaiian or Pacific Islander	138	0.09%
Other	286	0.19%



2010 Election Results

Election	Party	Number	Percent
U.S. Senate	Republican	30,884	46.94%
	Democratic	31,642	48.10%
	Minor Party	3,262	4.96%
Governor	Republican	4,456	6.70%
	Democratic	34,333	51.59%
	Minor Party	27,760	41.71%
Treasurer	Republican	31,598	51.13%
	Democratic	30,199	48.87%

Communities within district

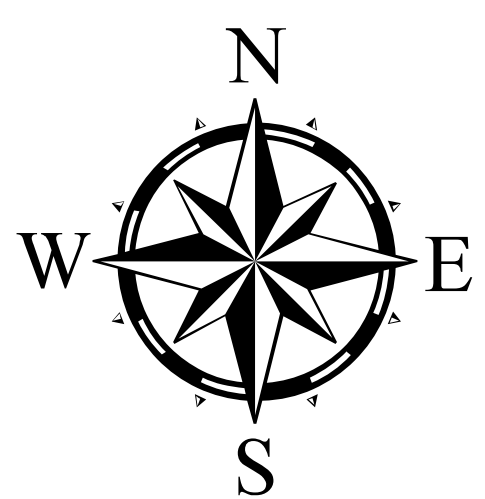
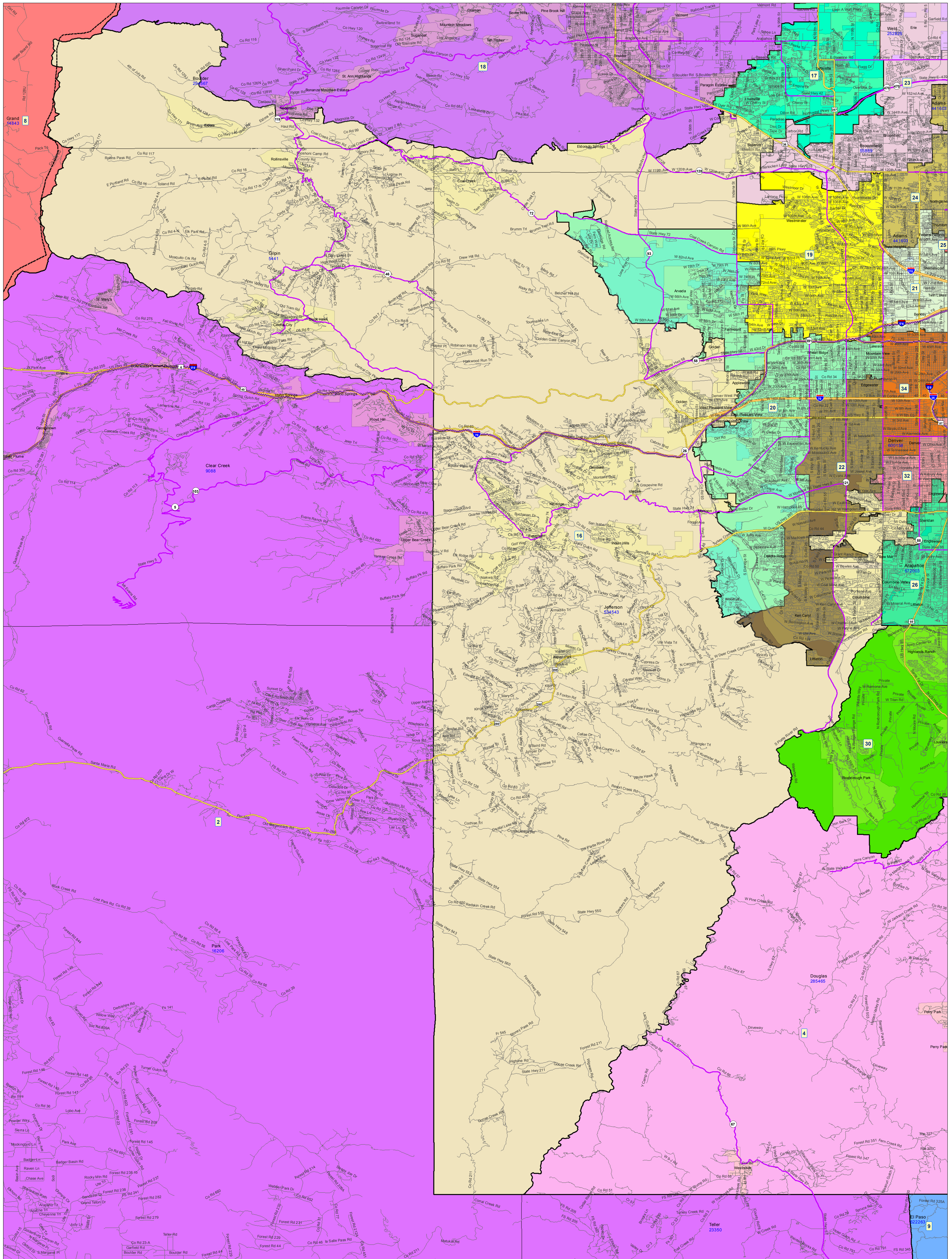
- Applewood
- Aspen Park
- Black Hawk
- Bow Mar
- Central City
- Coal Creek
- Columbine

Denver
Eldora
Eldorado Springs
Evergreen
Genesee
Golden
Idledale
Indian Hills
Kittredge
Littleton
Morrison
Rollinsville
Superior
West Pleasant View

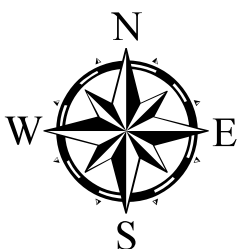
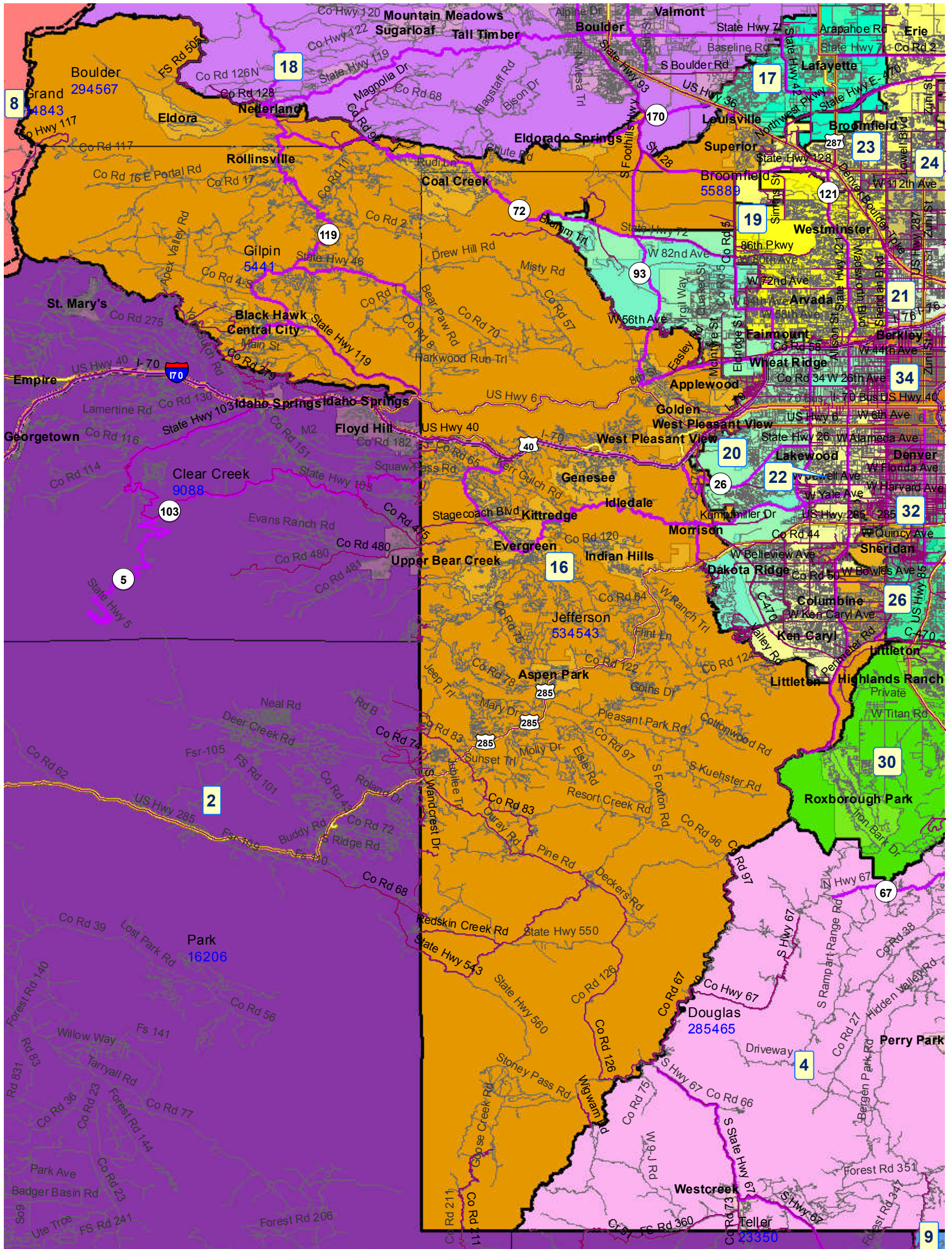
School Districts within district

Boulder Valley RE 2
Clear Creek RE-1
Denver County 1
Douglas County RE 1
East Grand 2
Gilpin County RE-1
Jefferson County R-1
Littleton 6
Park County RE-2
Platte Canyon 1
Sheridan 2
Woodland Park RE-2

Senate District 16 After 2011 Reapportionment



Senate District 16 After 2011 Reapportionment



Senate District 16 After 2011 Reapportionment

