



Legislative District Information After 2011 Reapportionment Senate District 15

House Districts: 49, 51, 52, 53

District Population: 140,984

County	Population	Percent
Larimer	140,984	100.00%

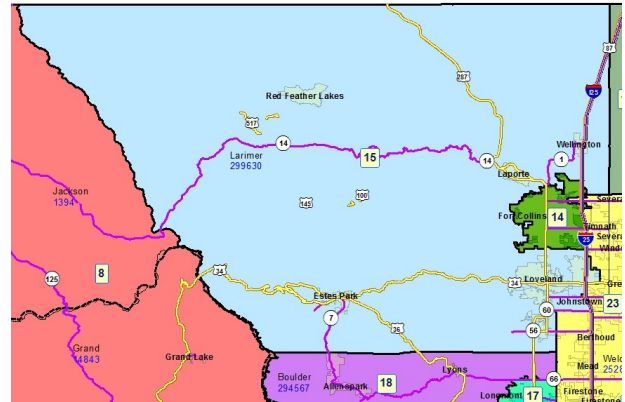
Registered Voters: 82,299

Party	Number	Percent
Republican	33,470	40.67%
Democratic	20,988	25.50%
Unaffiliated	27,278	33.14%
Minor Party	563	0.68%

Voting Age Population: 109,234

Population Demographics

Race/Ethnicity	Number	Percent
White-Non Hispanic	121,092	85.89%
Hispanic	15,223	10.80%
Black	1,068	0.76%
American Indian or Alaskan Native	1,424	1.01%
Asian	1,860	1.32%
Hawaiian or Pacific Islander	134	0.10%
Other	183	0.13%



2010 Election Results

Election	Party	Number	Percent
U.S. Senate	Republican	31,993	51.45%
	Democratic	26,103	41.98%
	Minor Party	4,084	6.57%
Governor	Republican	7,242	11.41%
	Democratic	28,308	44.61%
	Minor Party	27,914	43.98%
Treasurer	Republican	34,663	56.96%
	Democratic	26,187	43.04%

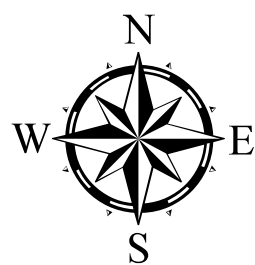
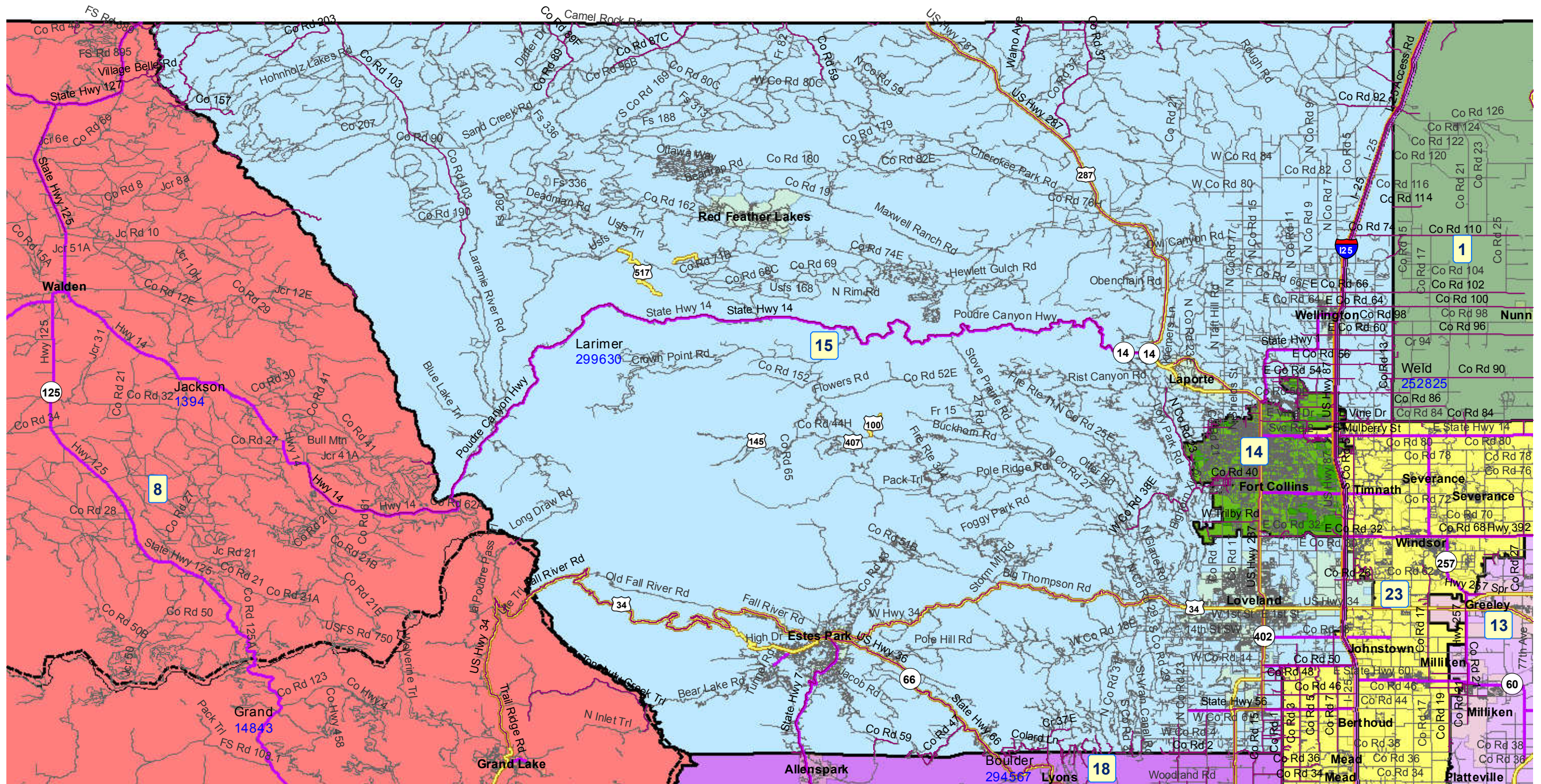
Communities within district

- Berthoud
- Estes Park
- Laporte
- Loveland
- Red Feather Lakes
- Wellington

School Districts within district

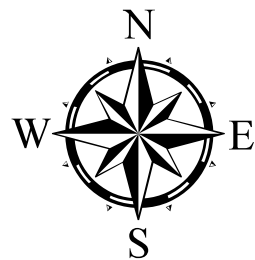
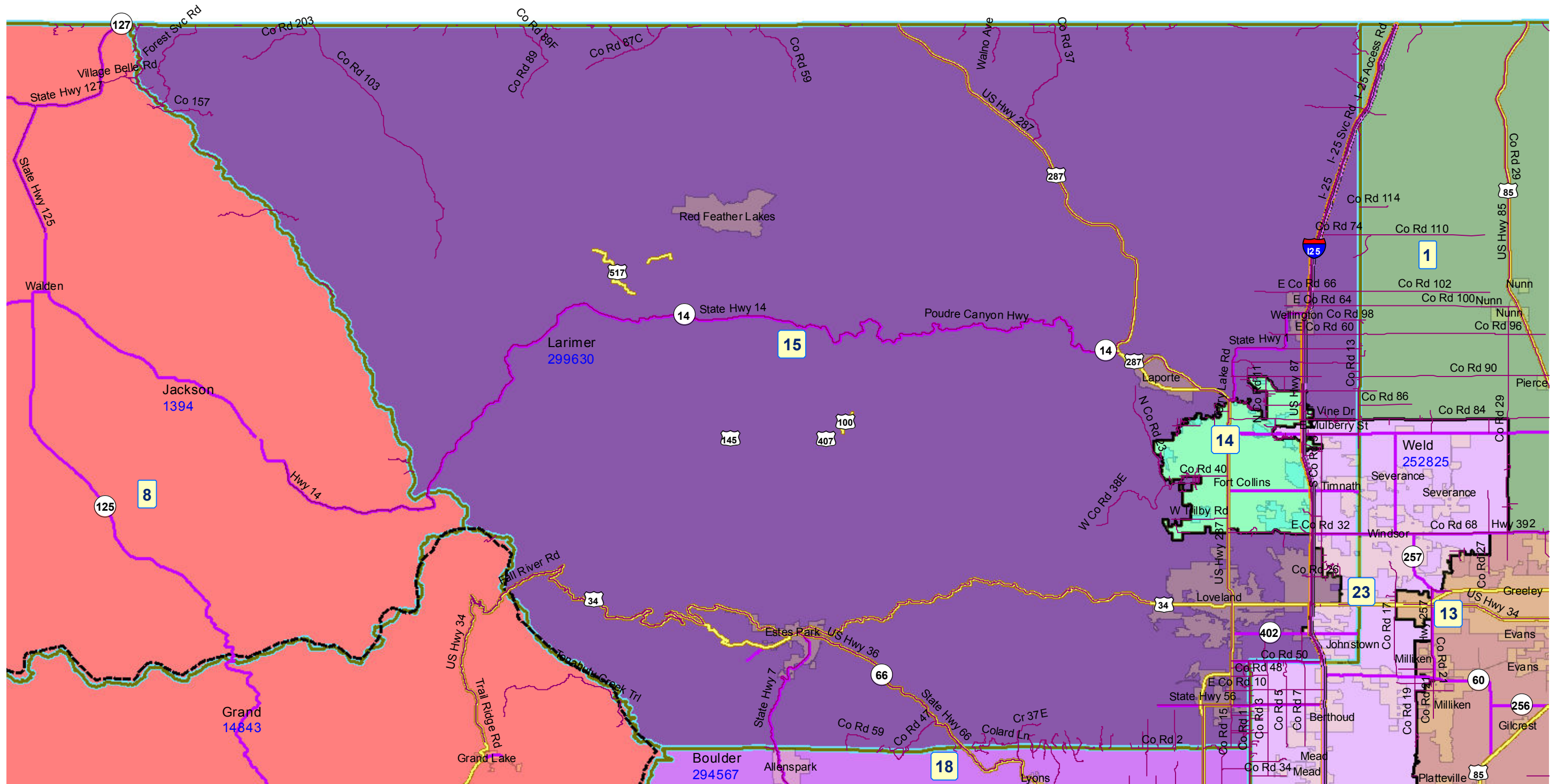
- Ault-Highland RE-9
- East Grand 2
- North Park R-1
- Park (Estes Park) R-3
- Poudre R-1
- St Vrain Valley RE 1J
- Thompson R-2J
- Windsor RE-4

Senate District 15 After 2011 Reapportionment



Prepared by Reapportionment Commission Staff
December 2011

Senate District 15 After 2011 Reapportionment



Prepared by Reapportionment Commission Staff
December 2011