



# Legislative District Information After 2011 Reapportionment House District 20

**Senate Districts: 2, 9, 11, 12**

**District Population: 78,942**

County	Population	Percent
El Paso County	78,942	100%

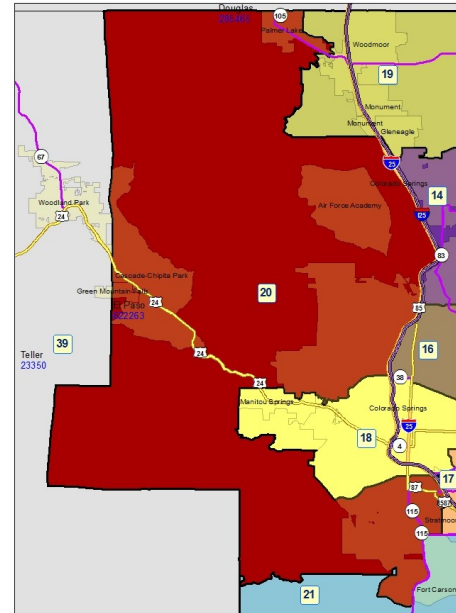
**Registered Voters: 42,227**

Party	Number	Percent
Republican	21,165	50.12%
Democratic	8,848	20.95%
Unaffiliated	11,976	28.36%
Minor Party	238	0.56%

**Voting Age Population: 62,103**

### Population Demographics

Race/Ethnicity	Number	Percent
White-Non Hispanic	62,920	79.70%
Hispanic	8,102	10.26%
Black	3,290	4.17%
American Indian or Alaskan Native	797	1.01%
Asian	3,391	4.30%
Hawaiian or Pacific Islander	279	0.35%
Other	163	0.21%



### 2010 Election Results

Election	Party	Number	Percent
U.S. Senate	Republican	18,688	61.12%
	Democratic	10,629	34.76%
	Minor Party	1,259	4.12%
Governor	Republican	4,676	15.26%
	Democratic	12,167	39.70%
Treasurer	Minor Party	13,801	45.04%
	Republican	18,928	64.21%
	Democratic	10,549	35.79%

### Communities within district

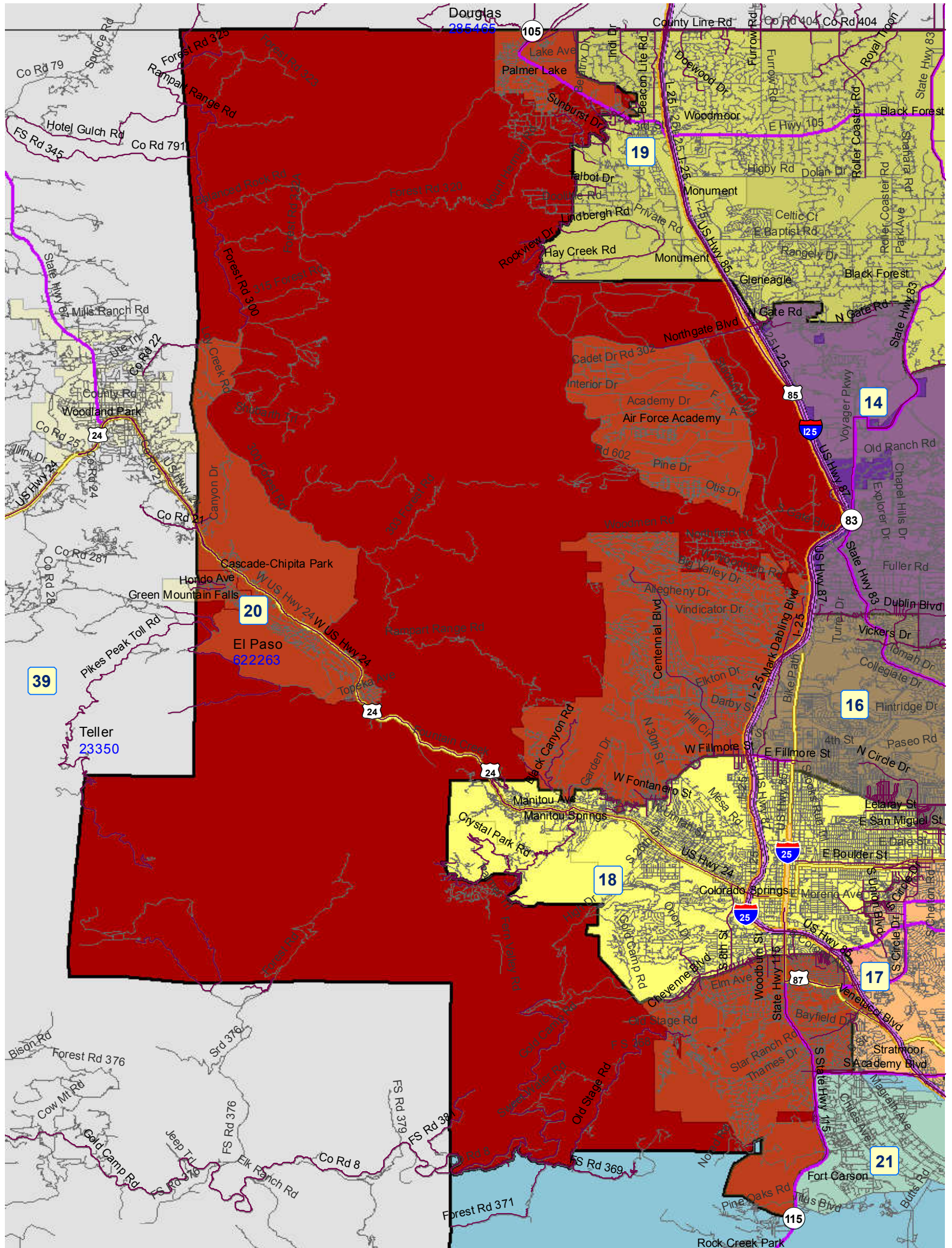
- Air Force Academy
- Cascade-Chipita Park
- Colorado Springs
- Green Mountain Falls
- Palmer Lake

***School Districts within district***

---

Academy 20  
Cheyenne Mountain 12  
Colorado Springs 11  
Cripple Creek-Victor RE-1  
Douglas County RE 1  
Fountain 8  
Harrison 2  
Lewis-Palmer 38  
Manitou Springs 14  
Woodland Park RE-2

# House District 20 After 2011 Reapportionment



# House District 20 After 2011 Reapportionment

