



# Legislative District Information

## After 2011 Reapportionment

### House District 11

**Senate Districts: 17, 18**

**District Population: 75,739**

County	Population	Percent
Boulder County	75,739	100%

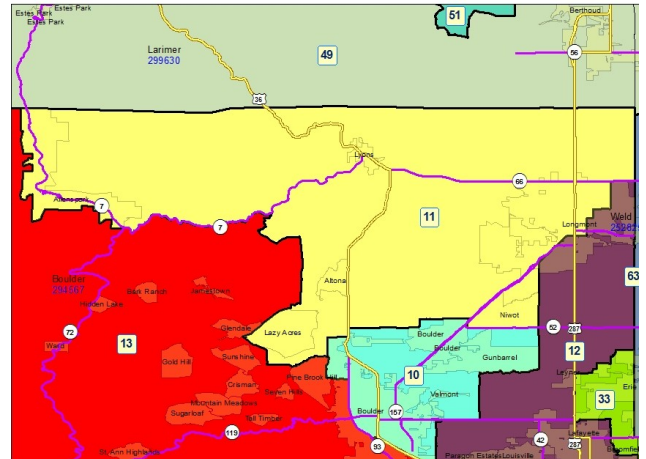
**Registered Voters: 40,724**

Party	Number	Percent
Republican	12,164	29.87%
Democratic	14,285	35.08%
Unaffiliated	13,923	34.19%
Minor Party	352	0.86%

**Voting Age Population: 57,415**

#### Population Demographics

Race/Ethnicity	Number	Percent
White-Non Hispanic	56,925	75.16%
Hispanic	14,417	19.04%
Black	823	1.09%
American Indian or Alaskan Native	681	0.90%
Asian	2,718	3.59%
Hawaiian or Pacific Islander	75	0.10%
Other	100	0.13%



#### 2010 Election Results

Election	Party	Number	Percent
U.S. Senate	Republican	12,489	40.22%
	Democratic	16,828	54.20%
	Minor Party	1,733	5.58%
Governor	Republican	2,397	7.67%
	Democratic	17,755	56.78%
	Minor Party	11,116	35.55%
Treasurer	Republican	13,140	43.79%
	Democratic	16,869	56.21%

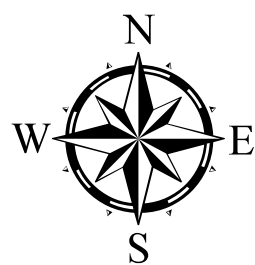
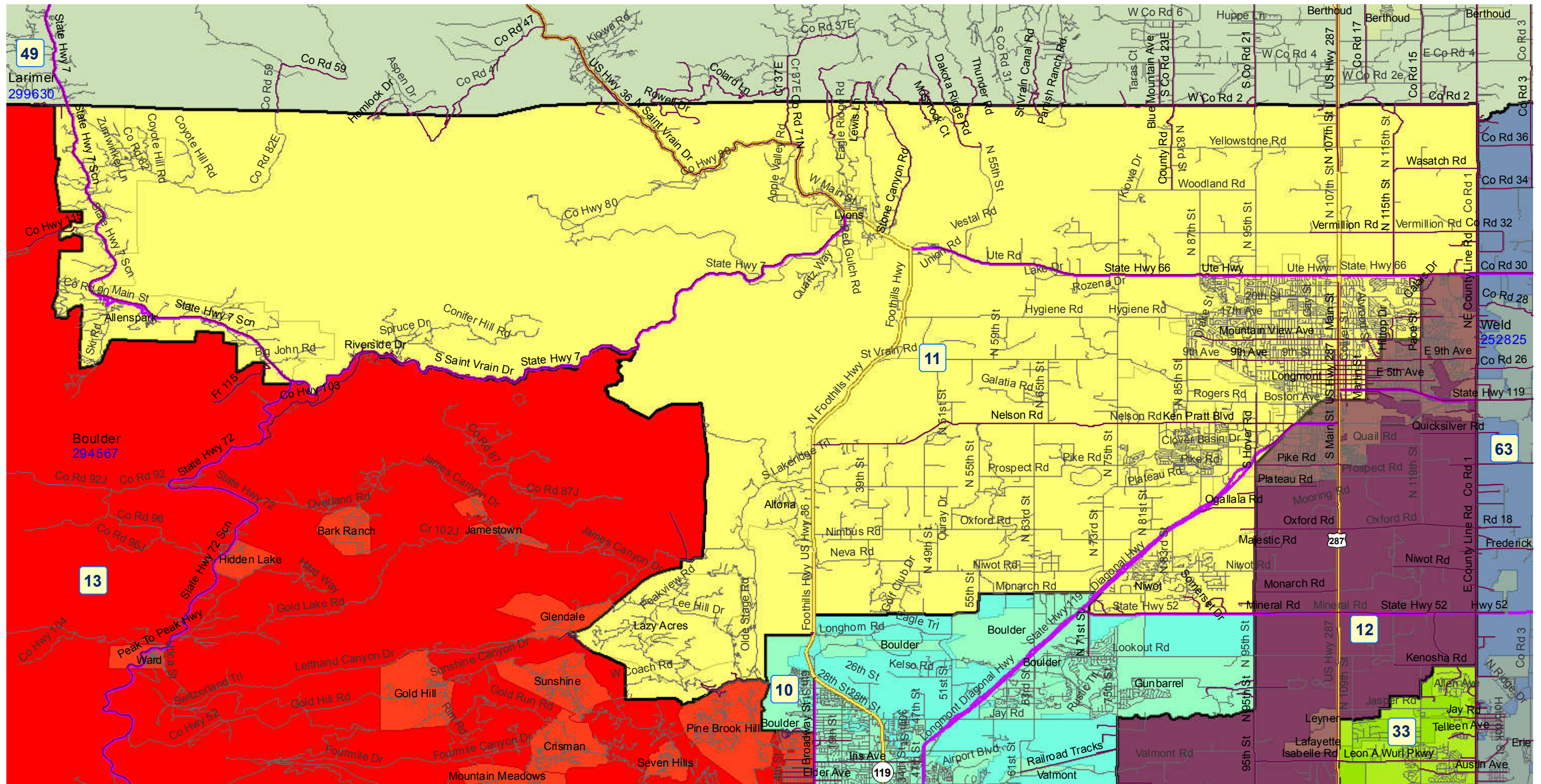
#### Communities within district

Allenspark  
 Altona  
 Lazy Acres  
 Longmont  
 Lyons  
 Niwot

#### School Districts within district

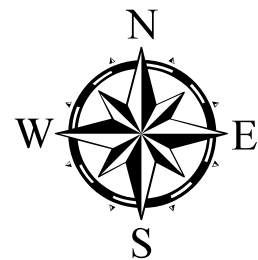
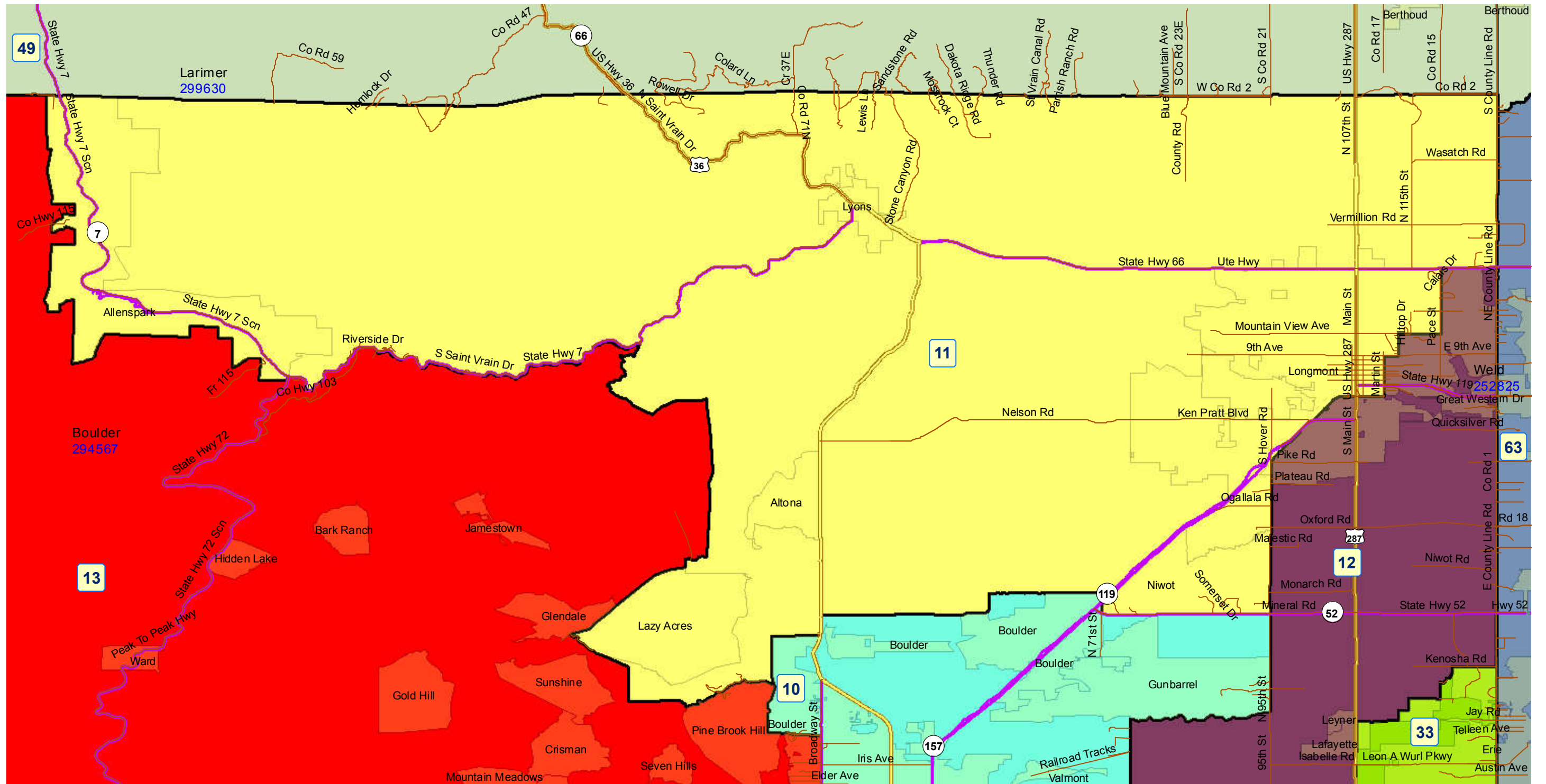
Boulder Valley RE 2  
 Park (Estes Park) R-3  
 St Vrain Valley RE 1J  
 Thompson R-2J

# House District 11 After 2011 Reapportionment



Prepared by Reapportionment Commission Staff  
December 2011

# House District 11 After 2011 Reapportionment



Prepared by Reapportionment Commission Staff  
December 2011