



# Legislative District Information

## After 2011 Reapportionment

### House District 54

**Senate Districts: 5, 7**

**District Population: 79,120**

County	Population	Percent
Mesa County	67,604	85%
Delta County	11,516	15%

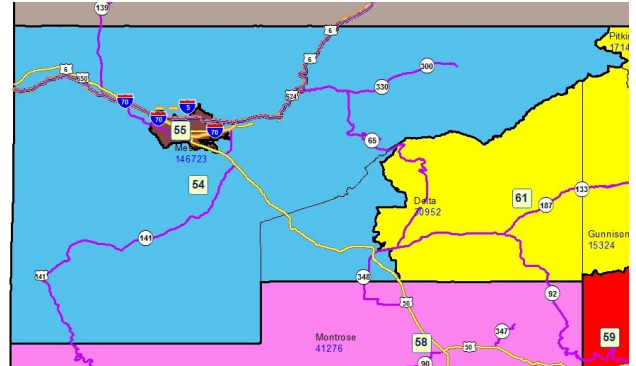
**Registered Voters: 38,355**

Party	Number	Percent
Republican	18,802	49.02%
Democratic	7,513	19.59%
Unaffiliated	11,701	30.51%
Minor Party	339	0.88%

**Voting Age Population: 58,974**

#### Population Demographics

Race/Ethnicity	Number	Percent
White-Non Hispanic	65,093	82.27%
Hispanic	11,449	14.47%
Black	715	0.90%
American Indian or Alaskan Native	1,076	1.36%
Asian	594	0.75%
Hawaiian or Pacific Islander	101	0.13%
Other	92	0.12%



#### 2010 Election Results

Election	Party	Number	Percent
U.S. Senate	Republican	18,432	63.97%
	Democratic	8,076	28.03%
	Minor Party	2,307	8.01%
Governor	Republican	5,996	20.75%
	Democratic	9,110	31.53%
	Minor Party	13,786	47.72%
Treasurer	Republican	19,598	71.49%
	Democratic	7,817	28.51%

#### Communities within district

Clifton  
 Collbran  
 De Beque  
 Delta  
 Fruita  
 Fruitvale  
 Loma  
 Orchard Mesa  
 Palisade  
 Redlands

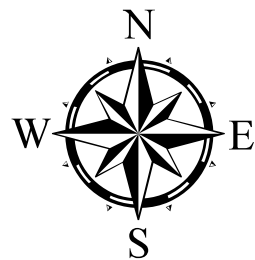
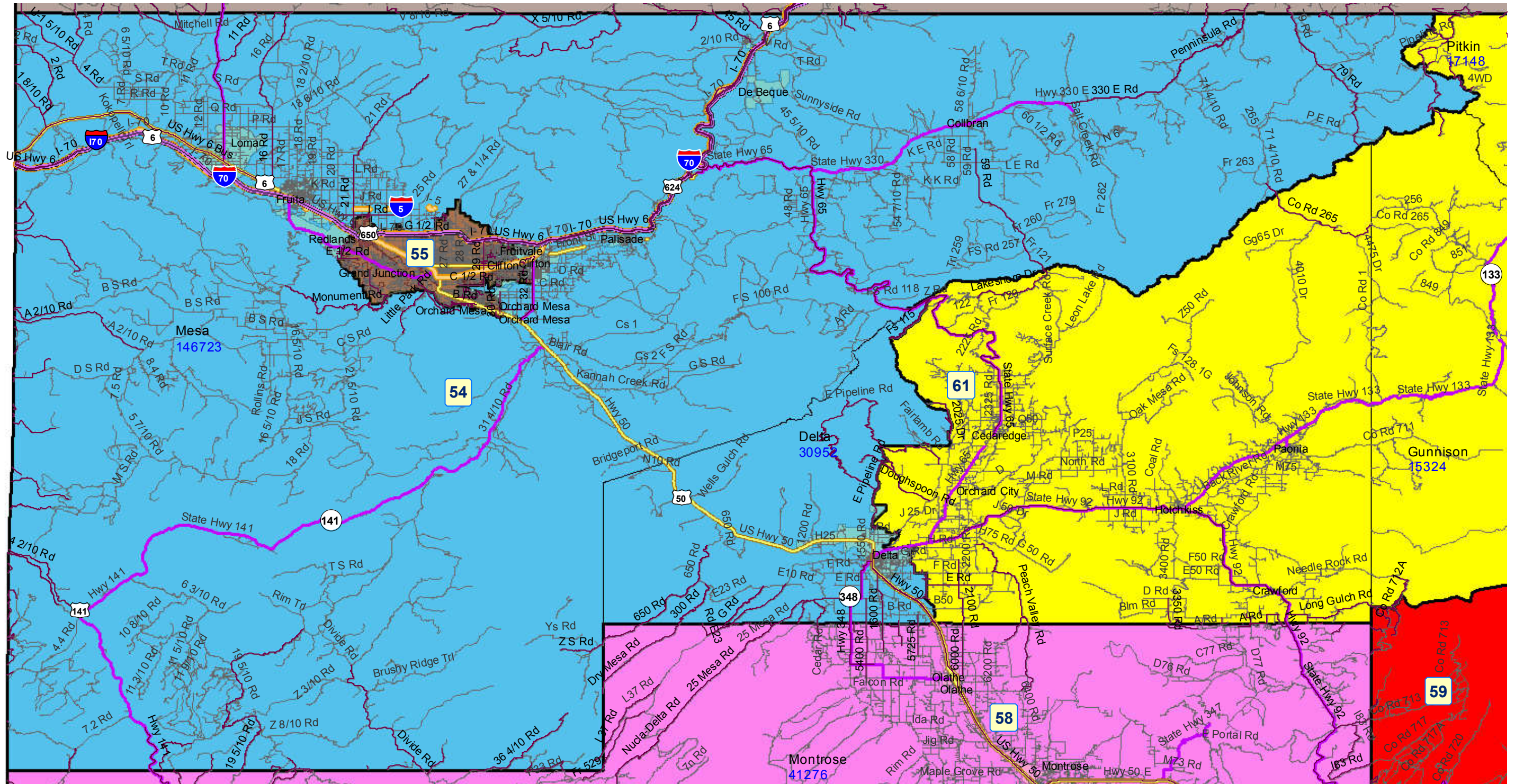
***School Districts within district***

---

De Beque 49JT  
Delta County 50(J)  
Garfield (Parachute) 16  
Garfield (Rifle) RE-2  
Mesa County Valley 51  
Montrose County RE-1J  
Plateau Valley 50  
Roaring Fork RE-1  
West End RE-2

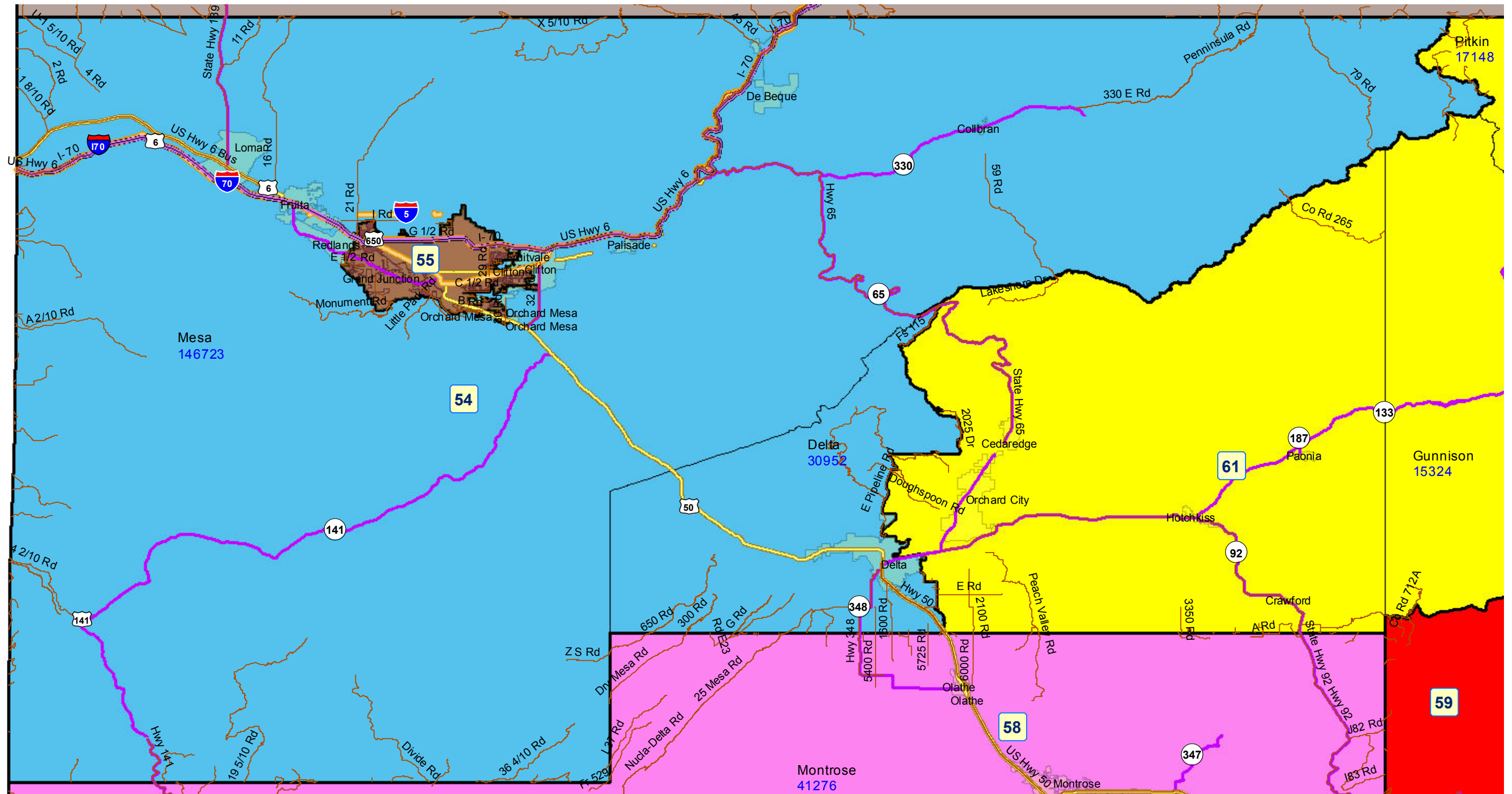


# House District 54 After 2011 Reapportionment





# House District 54 After 2011 Reapportionment



Prepared by Reapportionment Commission Staff  
December 2011