



Legislative District Information After 2011 Reapportionment House District 57

Senate Districts: 8

District Population: 76,850

County	Population	Percent
Garfield County	56,389	73%
Moffat County	13,795	18%
Rio Blanco County	6,666	9%

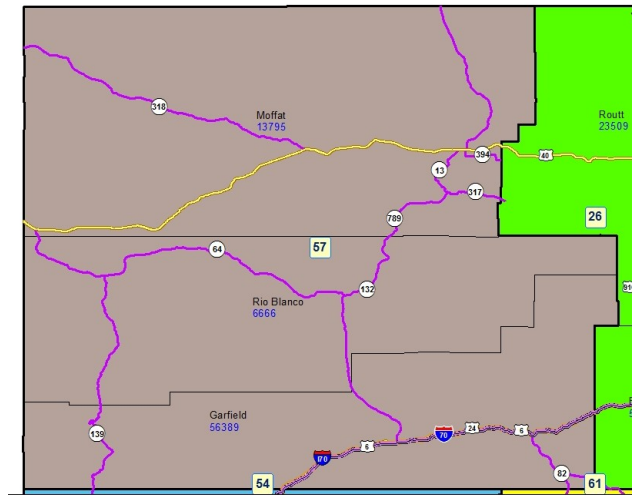
Registered Voters: 34,258

Party	Number	Percent
Republican	14,881	43.44%
Democratic	7,620	22.24%
Unaffiliated	11,471	33.48%
Minor Party	286	0.83%

Voting Age Population: 56,280

Population Demographics

Race/Ethnicity	Number	Percent
White-Non Hispanic	55,952	72.81%
Hispanic	18,628	24.24%
Black	509	0.66%
American Indian or Alaskan Native	910	1.18%
Asian	650	0.85%
Hawaiian or Pacific Islander	78	0.10%
Other	123	0.16%



2010 Election Results

Election	Party	Number	Percent
U.S. Senate	Republican	13,386	53.85%
	Democratic	9,646	38.80%
	Minor Party	1,826	7.35%
Governor	Republican	5,525	21.97%
	Democratic	10,223	40.64%
	Minor Party	9,404	37.39%
Treasurer	Republican	14,673	61.32%
	Democratic	9,254	38.68%

Communities within district

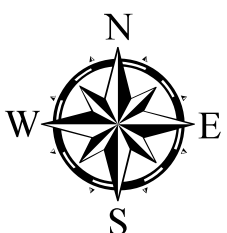
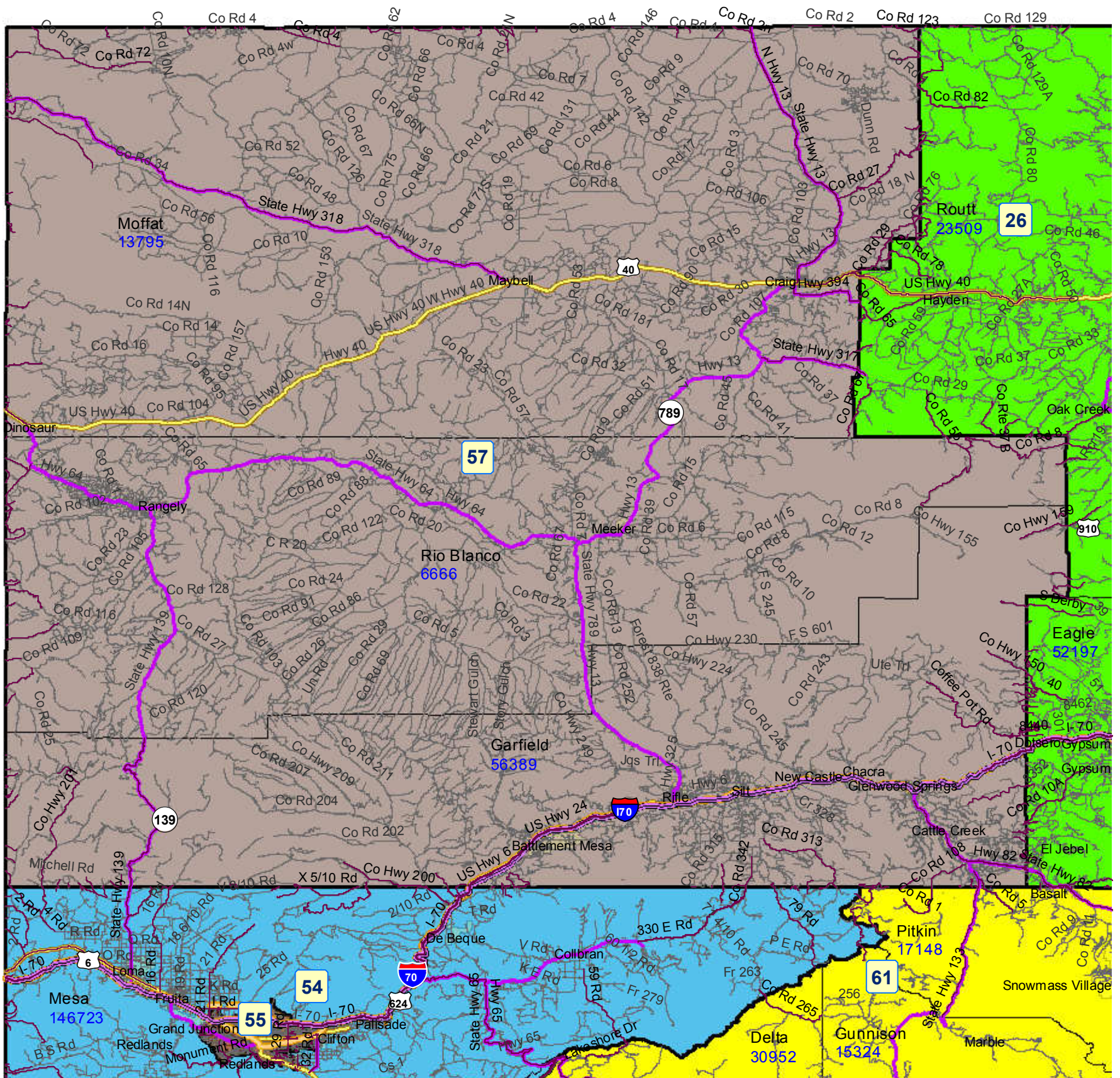
- Battlement Mesa
- Carbondale
- Catherine
- Cattle Creek
- Chacra
- Craig
- Dinosaur
- Glenwood Springs
- Maybell
- Meeker
- Mulford
- New Castle

No Name
Parachute
Rangely
Rifle
Silt

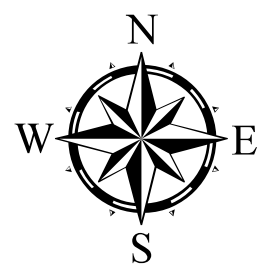
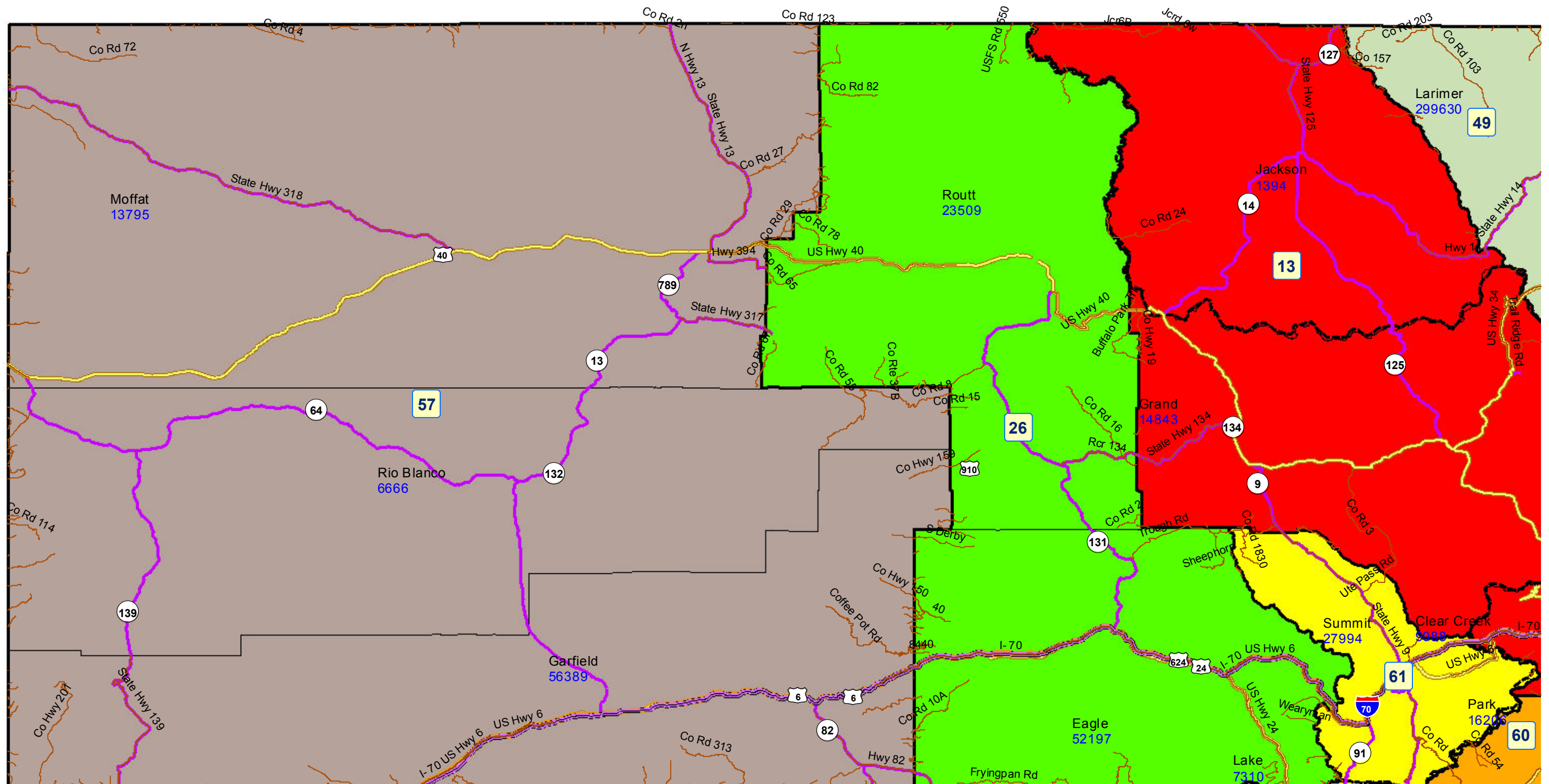
School Districts within district

De Beque 49JT
Eagle County RE 50
Garfield (Parachute) 16
Garfield (Rifle) RE-2
Hayden RE-1
Meeker RE-1
Mesa County Valley 51
Moffat County RE:NO 1
Plateau Valley 50
Rangely RE-4
Roaring Fork RE-1
South Routt RE 3
Steamboat Sprgs RE-2

House District 57 After 2011 Reapportionment



House District 57 After 2011 Reapportionment



Prepared by Reapportionment Commission Staff
December 2011